



DYKEMAN

Ferndale School District

Design Development Submittal / 07.31.2020

# FERNDALE HIGH SCHOOL

# TOC

## Table of Contents

<b>S1</b>	<b>Renderings</b>	<b>3</b>
<b>S2</b>	<b>Rendered Site Plan</b>	<b>11</b>
<b>S3</b>	<b>Numeric Program Update</b>	<b>12</b>
<b>S4</b>	<b>Department Level Building Plans</b>	<b>17</b>
<b>S5</b>	<b>FF&amp;E Plans (with Equipment Lists as Appropriate)</b>	<b>21</b>
<b>S6</b>	<b>WSSP Checklist</b>	<b>47</b>
<b>S7</b>	<b>Daylighting Studies</b>	<b>56</b>
<b>S8</b>	<b>Signage</b>	<b>61</b>



# S1 | Renderings



Birds Eye from the West



Main Entry







South Entry



CTE/Athletics Entry





## Commons



Learning Commons





Extended Learning Space

## S1 / Renderings

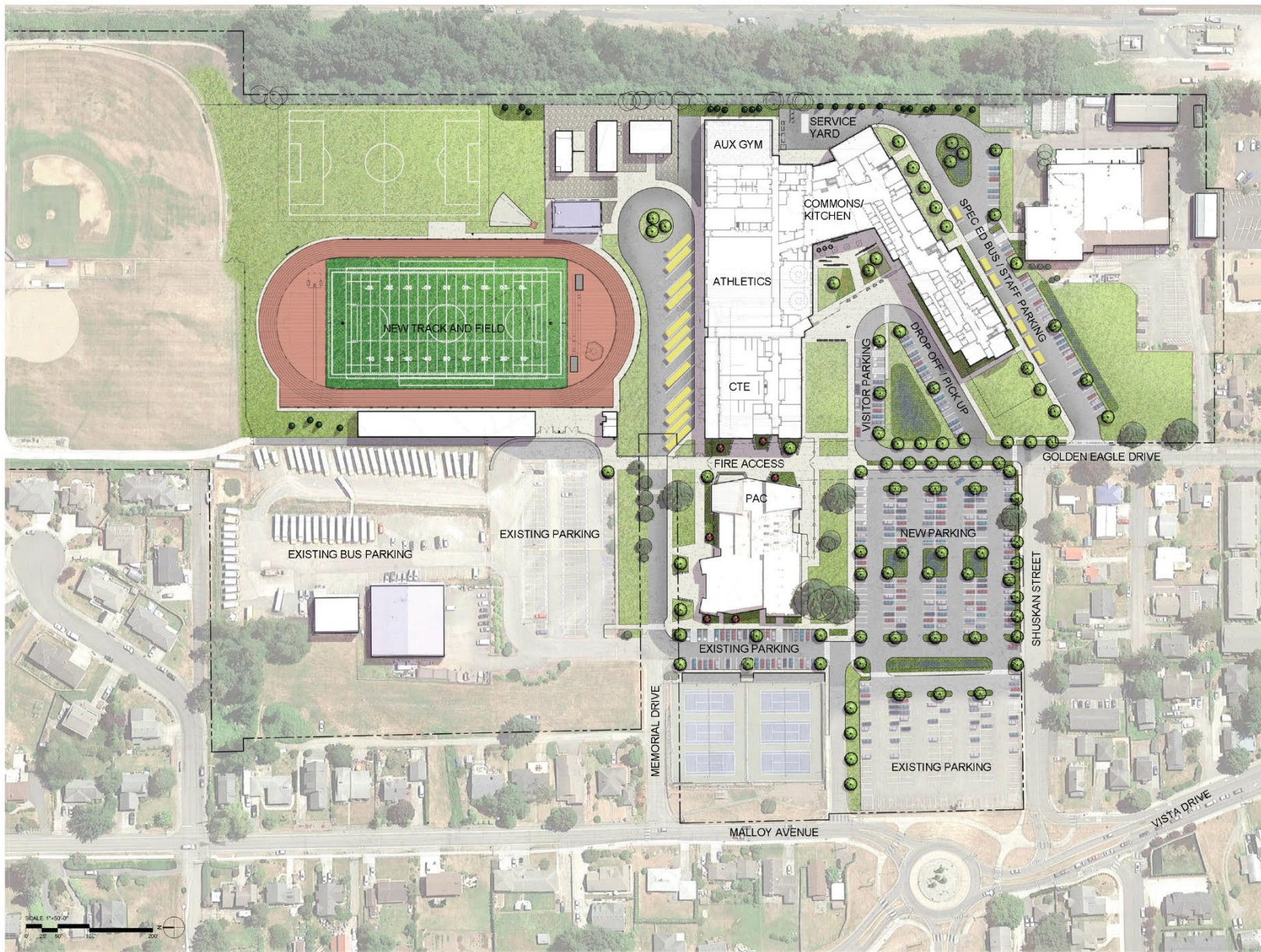
---



Classroom







# S2 | Rendered Site Plan

Description of Space		SD SF Total	SD District Target		DD SF Total	DD District Target
<b>Administration</b>						
Principal		199	200		205	200
Vice-Principal		236	240		248	240
CTE Director		115	120		124	120
CTE AA Support Office		84	80		82	80
Athletic Director		77	120		124	120
Athletic Director AA		58	60		76	60
Conference Room - Large		272	300		377	300
Conference Room - Small		109	120		158	120
Office Manager		111	80		90	80
ASB/ Bookkeeper		109	115		122	115
Student Workstations		80	80		92	80
Amin. Assistant		80	80		94	80
AA Support		47	50			50
Reception		124	150		205	150
Waiting		267	310		367	310
CSO Workstation		125	120		124	120
Mailboxes		0	45		62	45
Workroom		536	550		659	550

Attendance Secretary		154	160		152	160
Records Storage		246	210		139	210
Staff Toilet		118	112		144	112
Student Support Center		139	140		142	140
<b>Subtotal</b>		<b>3286</b>	<b>3442</b>		<b>3786</b>	<b>3442</b>

Description of Space		SD SF Total	SD District Target		DD SF Total	DD District Target
<b>Counseling</b>						
Waiting		95	110		109	110
Receptionist		80	80		77	80
Itinerate Offices		552	400		649	480 <sup>*1</sup>
Special Education AA Office					95	80
Counseling Offices		408	400		436	400
Registrar		97	100		108	100
Student Records		238	250		266	250
Student Work Station		0	40		50	40
Conference Room		162	120		149	120
Psychologist		127	120		125	120
Career Center		572	600		602	600
<b>Subtotal</b>		<b>2328</b>	<b>2380</b>		<b>2666</b>	<b>2380</b>



Description of Space		SD SF Total	SD District Target		DD SF Total	DD District Target
<b>Nurse/Health Services</b>						
Office		77	80		96	80
Cots		170	200		270	200
Toilet/Shower		86	80		87	80
Isolation		56	55		58	55
Waiting Area		96	80		85	80
Storage		40	40		44	40
<b>Subtotal</b>		<b>567</b>	<b>535</b>		<b>640</b>	<b>535</b>

Description of Space		SD SF Total	SD District Target		DD SF Total	DD District Target
<b>General Classrooms</b>						
General Education		17598	18900		18124	17850 <sup>*2</sup>
Health		899	900		865	850 <sup>*2</sup>
Leadership		899	900		863	850 <sup>*2</sup>
Collab Cubes					757	400 <sup>*17</sup>
Extended Learning Areas		2883	3200		2449	3200
<b>Subtotal</b>		<b>22279</b>	<b>23900</b>		<b>23058</b>	<b>23150</b>

Description of Space		SD SF Total	SD District Target		DD SF Total	DD District Target
<b>Science</b>						
General Science		8872	8700		8577	8700
Prep/Storage		538	360		406	240
Chemical Storage		50	105		134	70
<b>Subtotal</b>		<b>9461</b>	<b>9165</b>		<b>9117</b>	<b>9010</b>

Description of Space		SD SF Total	SD District Target		DD SF Total	DD District Target
<b>Career Technical Education (CTE)</b>						
Culinary Arts		2011	2000		2080	2000
Family and Consumer Sciences		838	900		873	850 <sup>*2</sup>
Shared Classrooms		2576	2700		2582	2550 <sup>*2</sup>
Shared Labs		3198	3300		3156	3300
Lab Prep		342	155		209	155
Media Studio		335	300		277	300
Control Booth					143	145 <sup>*5</sup>
CADD Lab		2330	2300		2646	2700 <sup>*3</sup>
Metal Shop		2301	2300		3559	3500 <sup>*3</sup>
Wood Shop		2307	2300		3198	3200 <sup>*3</sup>
Shared Storage		653	650		0	0 <sup>*3</sup>
CTE Planning		469	450		448	450
Sports Med/ Treatment Room		1734	1500		1554	1500

## S3 / Numeric Program Update

Marketing Classroom		1436	900		886	900
Student Store			450		601	450
Aquaculture		0	0		0	0 <sup>*4</sup>
<b>Subtotal</b>		<b>20530</b>	<b>20205</b>		<b>22212</b>	<b>21900</b>

Description of Space		SD SF Total	SD District Target		DD SF Total	DD District Target
<b>P.E/Athletics</b>						
Gymnasium		14129	14150		14612	14150
Auxiliary Gym		7771	7250		7115	7250 <sup>*6</sup>
P.E Lab		4356	4000		4232	4000
Weight Room		2938	3200		0	0 <sup>*7</sup>
Locker Rooms		5020	5500		3960	4240 <sup>*8</sup>
Laundry		110	110		97	110
Staff Lockers & Toilets		608	630		613	630
Staff Offices		443	400		670	400
Mat Storage		129	200		263	200
Storage PE and Athletic		1204	1000		1288	1000 <sup>*7</sup>
Athletic Field Storage		0	0		0	0
Concessions		327	200		195	200
Restroom		517	400		724	400 <sup>*8</sup>
Single Occ. Locker Room					93	100 <sup>*9</sup>
Single Occ. Toilet					72	70 <sup>*9</sup>
Drying Room					189	190 <sup>*10</sup>

PE/Athletic Planning					491	500 <sup>*11</sup>
<b>Subtotal</b>		<b>37552</b>	<b>37040</b>		<b>34614</b>	<b>33440</b>

Description of Space		SD SF Total	SD District Target		DD SF Total	DD District Target
<b>Special Education</b>						
Resource		3352	3600		3481	3400 <sup>*2</sup>
Life Skills		2518	2700		2526	2700 <sup>*2, 12</sup>
Behavior		1676	1800		1780	1700 <sup>*2</sup>
Toilet/Shower/ Kitchen/Laundry		700	710		688	710
Quiet Space					85	85 <sup>*12</sup>
<b>Subtotal</b>		<b>8246</b>	<b>8810</b>		<b>8560</b>	<b>8595</b>

Description of Space		SD SF Total	SD District Target		DD SF Total	DD District Target
<b>Learning Commons (Library)</b>						
Learning Common		2693	3000		2926	2820 <sup>*17</sup>
Library Storage/ Work Room		0	50		148	50
Help Space		901	900		609	900
Circulation Desk		201	200		61	200
Collaboration Cubes		658	400		184	180 <sup>*17</sup>
<b>Subtotal</b>		<b>4619</b>	<b>4550</b>		<b>3928</b>	<b>4300</b>





Description of Space		SD SF Total	SD District Target		DD SF Total	DD District Target
<b>Commons and Food Services</b>						
Commons		6762	8000		6832	8000
Dispersed Commons		1975	1000		2081	1000
Kitchen		2101	2400		2609	2400
Serving Area		847	800		886	800
Snack Bars		167	300		185	300
Staff Toilet		0	56		68	56
Student Restrooms		0	400			- <sup>*13</sup>
Commons Chair Storage		259	800		331	350 <sup>*16</sup>
Office		74	120		228	120 <sup>*14</sup>
Cooler					123	120 <sup>*15</sup>
Kitchen storage					264	265 <sup>*15</sup>
<b>Subtotal</b>		<b>3477</b>	<b>4512</b>		<b>4770</b>	<b>4400</b>

Description of Space		SD SF Total	SD District Target		DD SF Total	DD District Target
<b>Staff Support</b>						
Faculty Lounge		545	500		806	500
Common Planning Areas		2932	3900		3964	3900
Staff Restrooms		0	112			- <sup>*13</sup>
<b>Subtotal</b>		<b>3477</b>	<b>4512</b>		<b>4770</b>	<b>4400</b>

Description of Space		SD SF Total	SD District Target		DD SF Total	DD District Target
<b>Custodial Services</b>						
Janitor		1373	400		473	400
Main Custodial Storage		457	350		511	350
Custodial Office		75	70		89	70
<b>Subtotal</b>		<b>1905</b>	<b>820</b>		<b>1073</b>	<b>820</b>

Description of Space		SD SF Total	SD District Target		DD SF Total	DD District Target
<b>Miscellaneous Services</b>						
Staff Restrooms		283	448		313	560 <sup>*13</sup>
Student Restrooms		2680	3500		3861	3900 <sup>*13</sup>
Single Occ. Toilet					43	45
<b>Subtotal</b>		<b>2963</b>	<b>3948</b>		<b>4217</b>	<b>4460</b>

## S3 / Numeric Program Update

Description of Space		SD SF Total	SD District Target		DD SF Total	DD District Target
<b>Building Totals</b>						
Net Building Area		129341	33183		132248	129838

### Design Development Notes

- 1 SPED Office moved from department area to counseling
- 2 Gen Ed Classroom Target reduced from 900 to 850SF
- 3 CTE Storage was incorporated into the CTE Shops and Buolding Support was moved to a mezzanning to support an over 200SF addition to the overall total shop spaces
- 4 An alternate was created to determine the cost of creating a new Aquaculture facility for this program. This program was not initially planned to be replaced.
- 5 A Media Studio was added to address the unique demands of the video program. The result of this approach is that the Photograph program will be housed in the existing PAC building gen ed classroom.
- 6 The Aux Gym was made an alternate to address budget concerns. The hope is (as it is with all of the alternates) that the bidding climate will allow for award of some alternates.
- 7 Existing Weight Room will remain as designed - Storage planned for that space will be housed in the new building in high density storage to minimize footprint.
- 8 Locker Room Target included space for restrooms in the locker rooms. Restroom space double counted in the numeric program.
- 9 Target Space for the single occupant locker room and restroom (gender neutral) we taken from the Locker Room Target Area
- 10 Drying Room Added Missing from original progA ram
- 11 Common Planning space added to PE program to support collaboration opportunities already programmed in to other departments.
- 12 Quiet Spaces were defined inside Life Skills Classrooms were added into support program.
13. Commons Restrooms removed from this department and put into building support
- 14 Added second office in Kitchen to address staff needs
- 15 Staff RR moved to Misc Building Services
- 16 Commons Storage was resized to support only separate chair capacity designed for the seating layout
- 17 Collab Cubes Target was moved from Learning Commons in SD to Gen Ed in DD

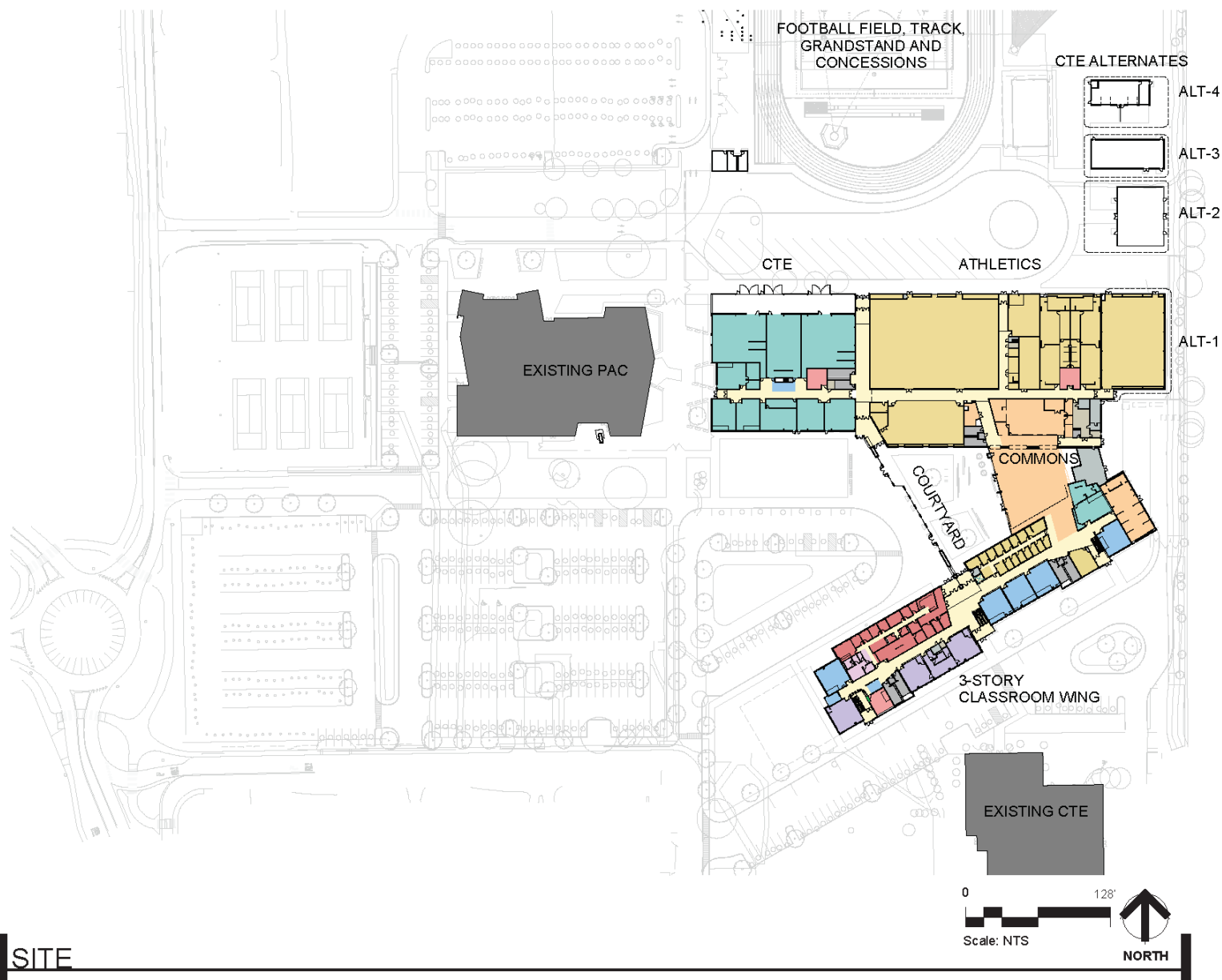
Description of Space					DD SF Total	
<b>Other Facilities</b>						
Greenhouse	Alternate 2				3281	
Aquaculture	Alternate 3				2429	
Agg. Science	Alternate 4				1652	
<b>Subtotal</b>					<b>7362</b>	
Description of Space					DD SF Total	
<b>Field Support</b>						
Grandstands					11500	
Concessions/ Ticketing					344	
Restrooms					382	
<b>Subtotal</b>					<b>12226</b>	



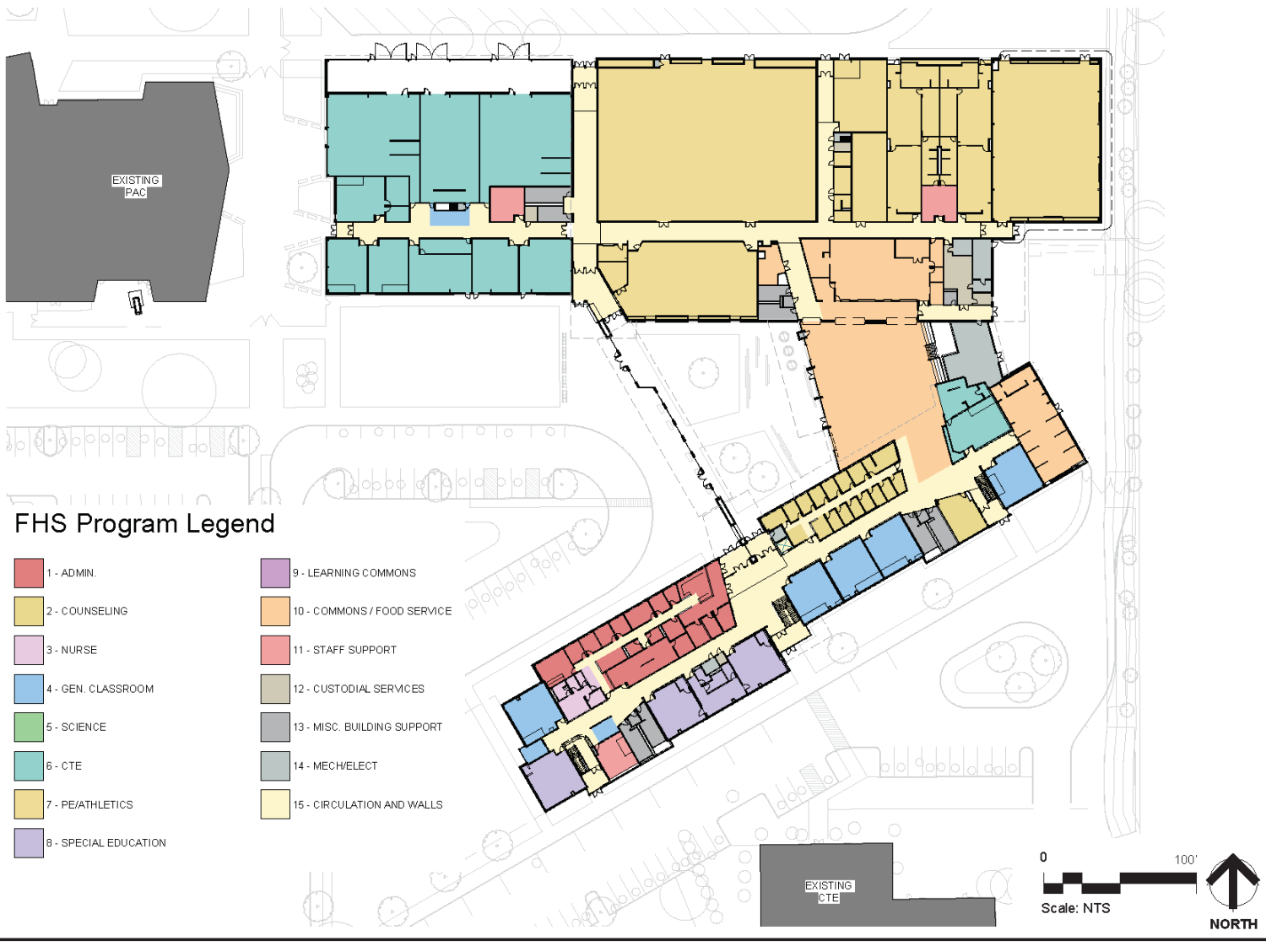


# S4

## Department Level Building Plans



# S4 / Department Level Building Plans



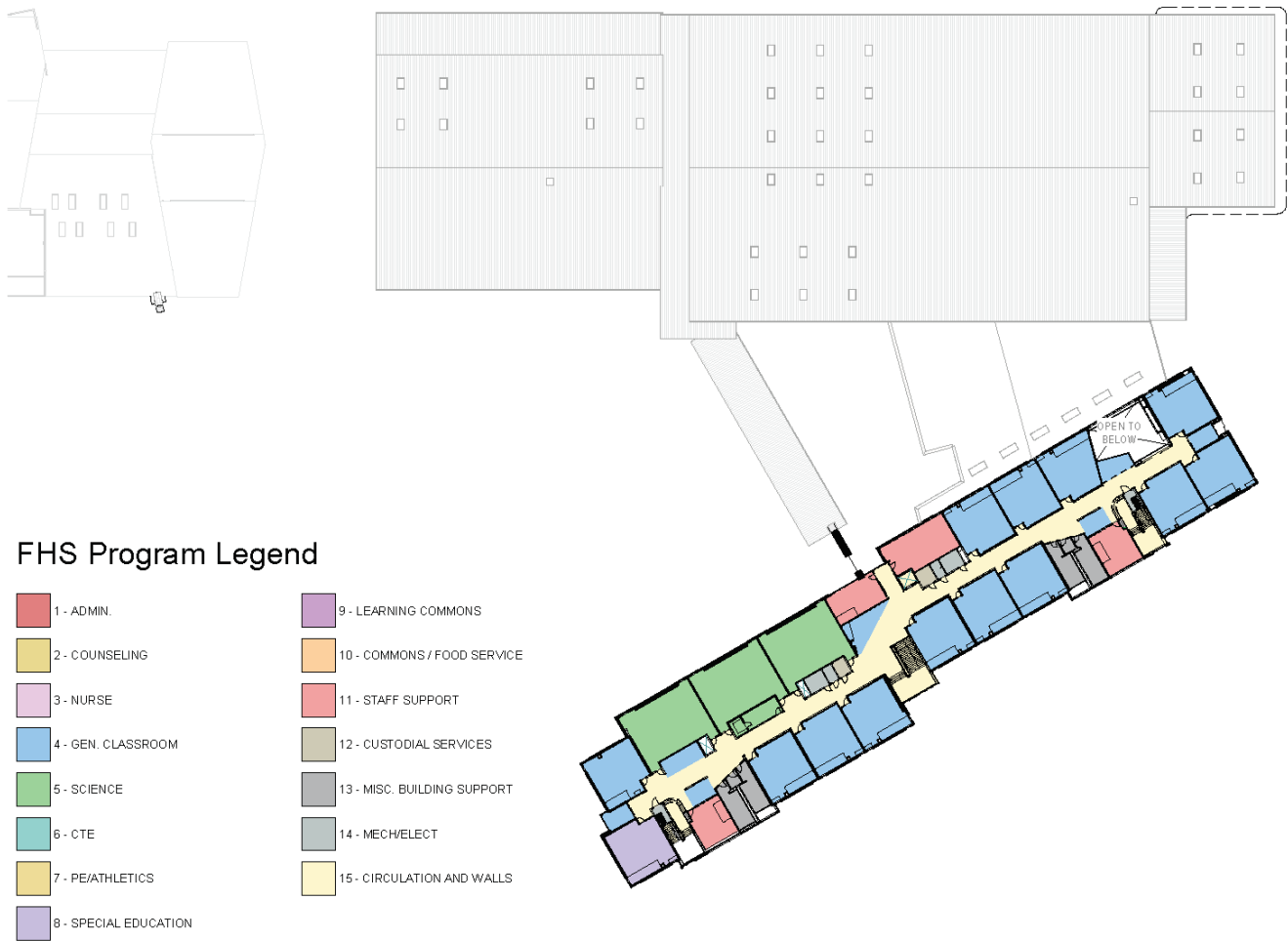
LEVEL 1



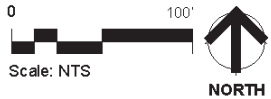




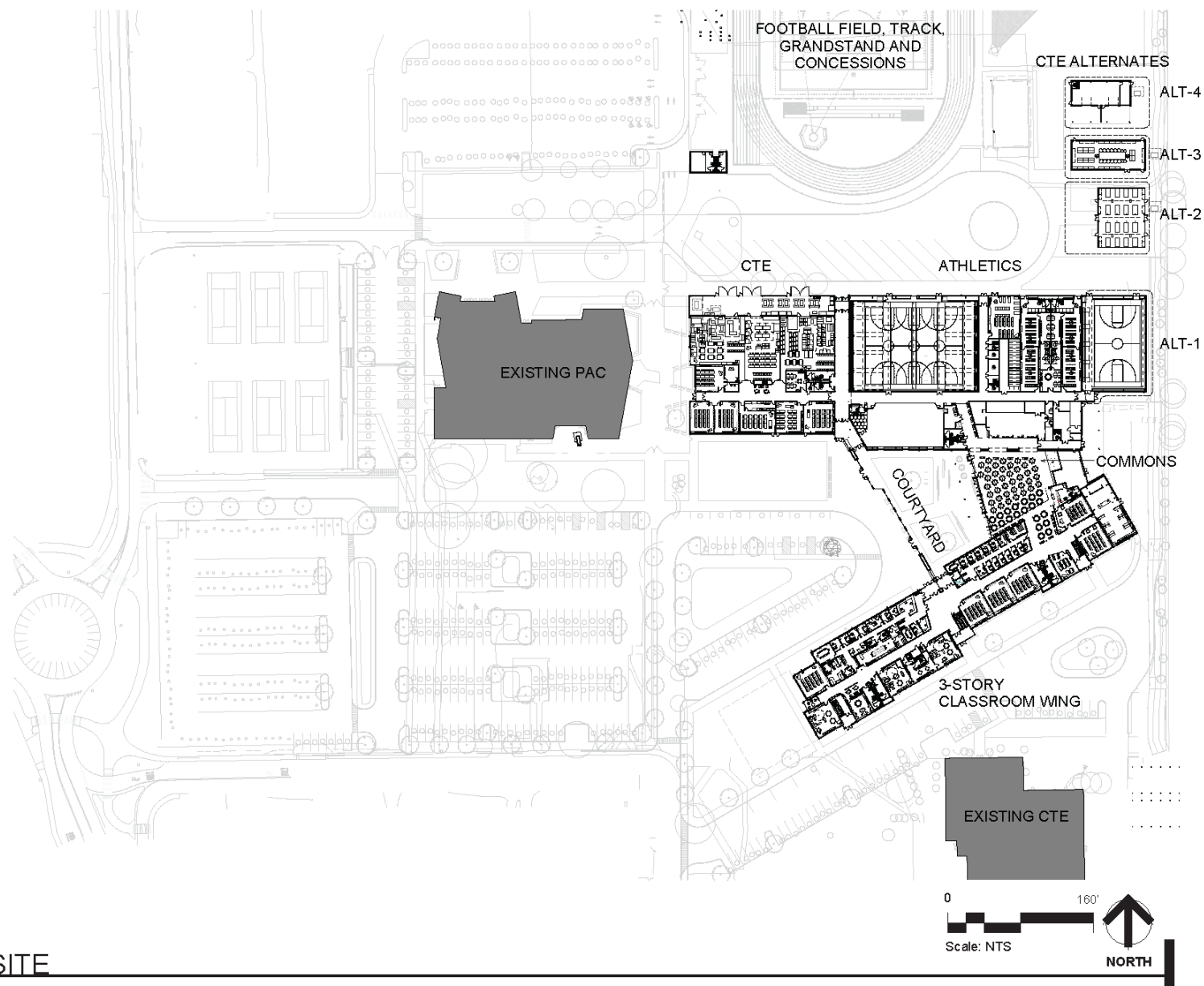
# S4 / Department Level Building Plans



LEVEL 3

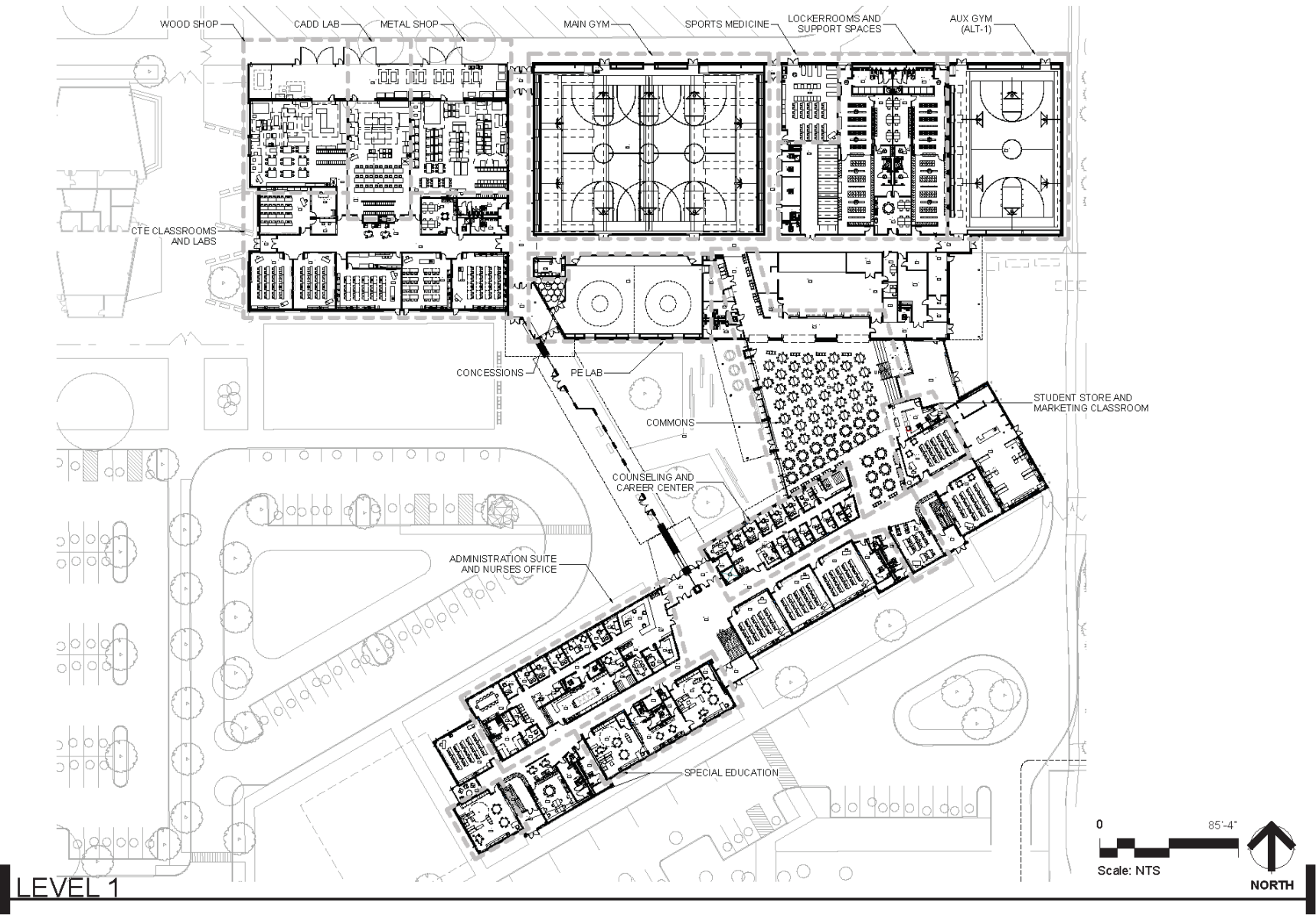




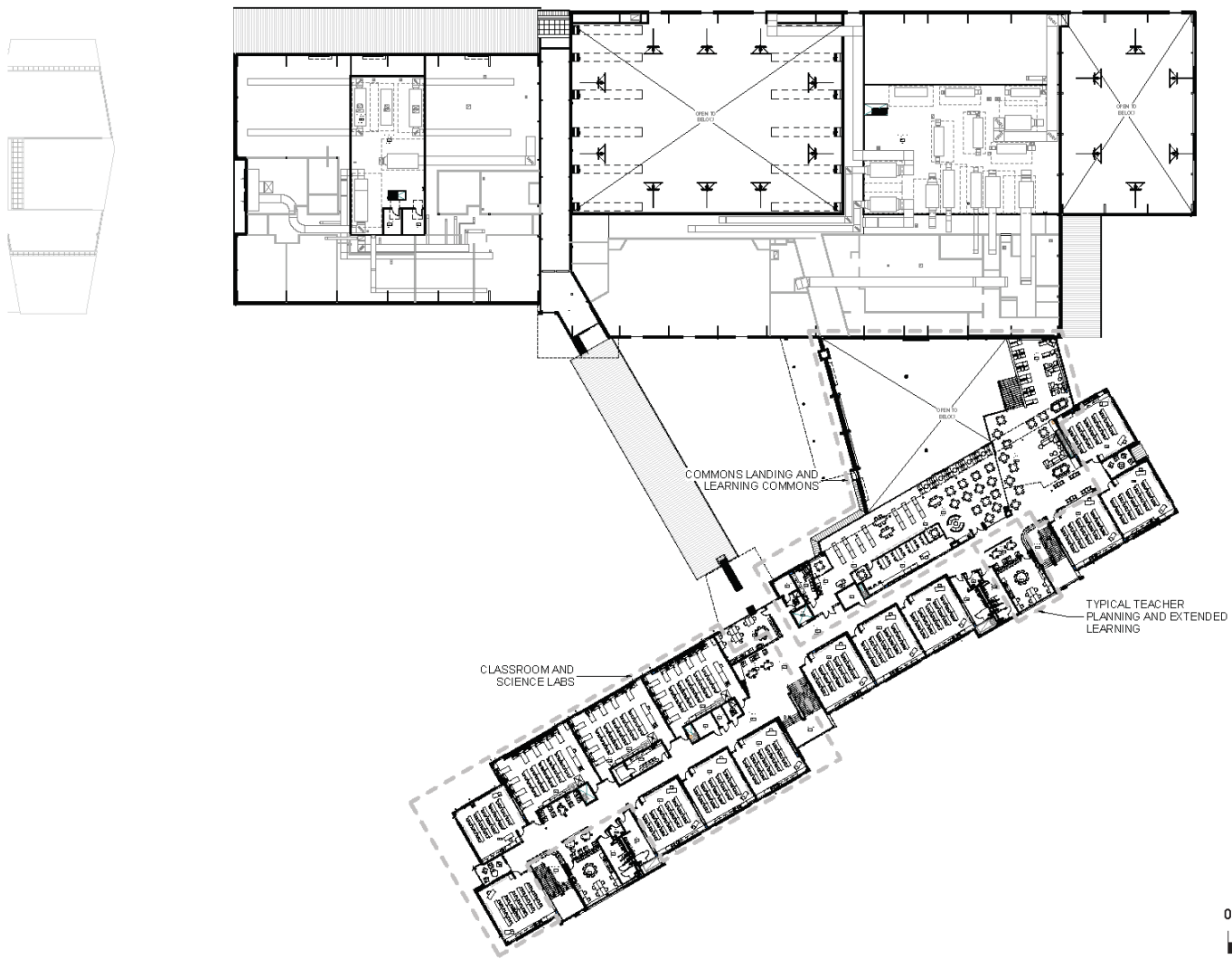


SITE

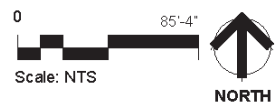
S5 / FF&E Plans







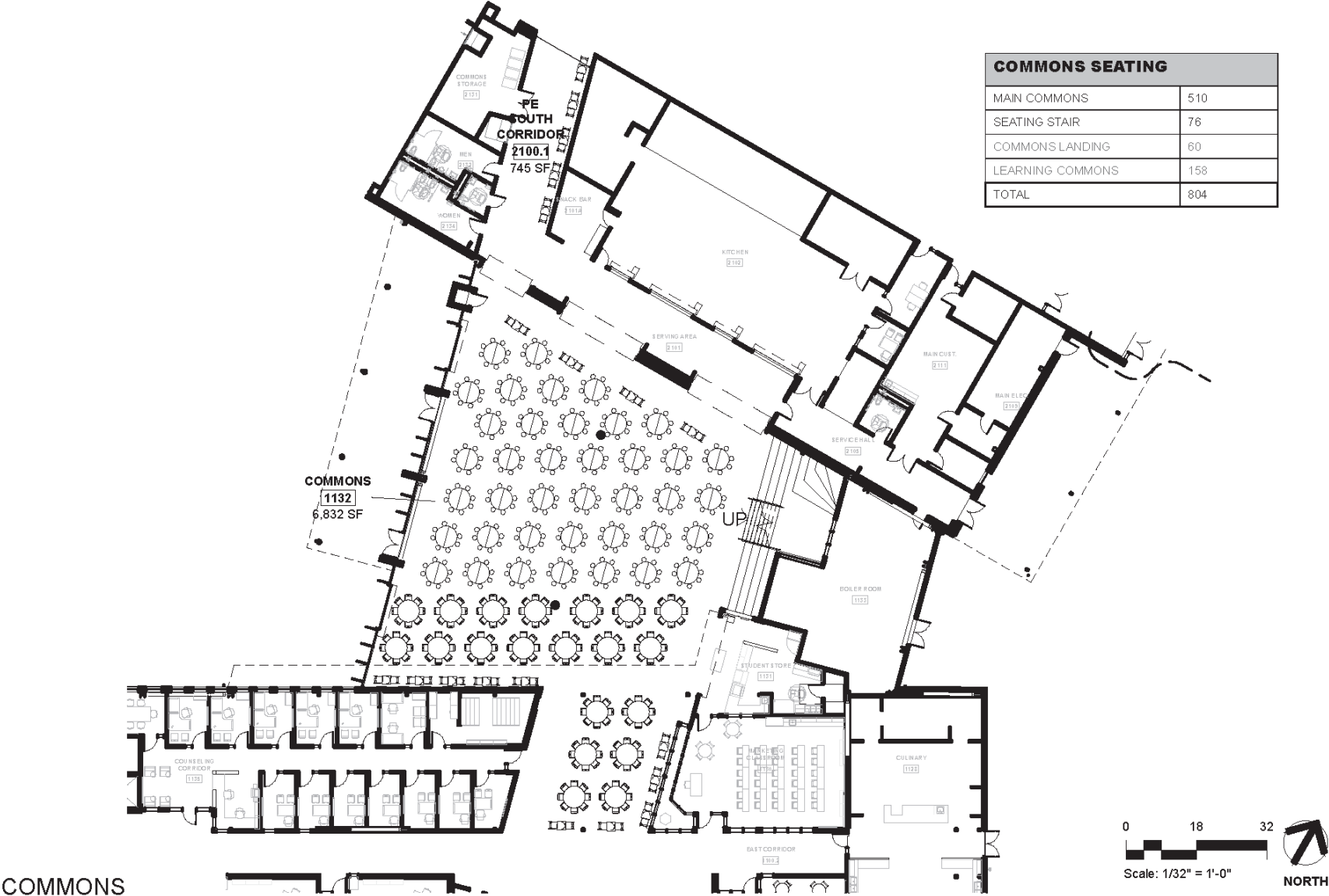
LEVEL 2





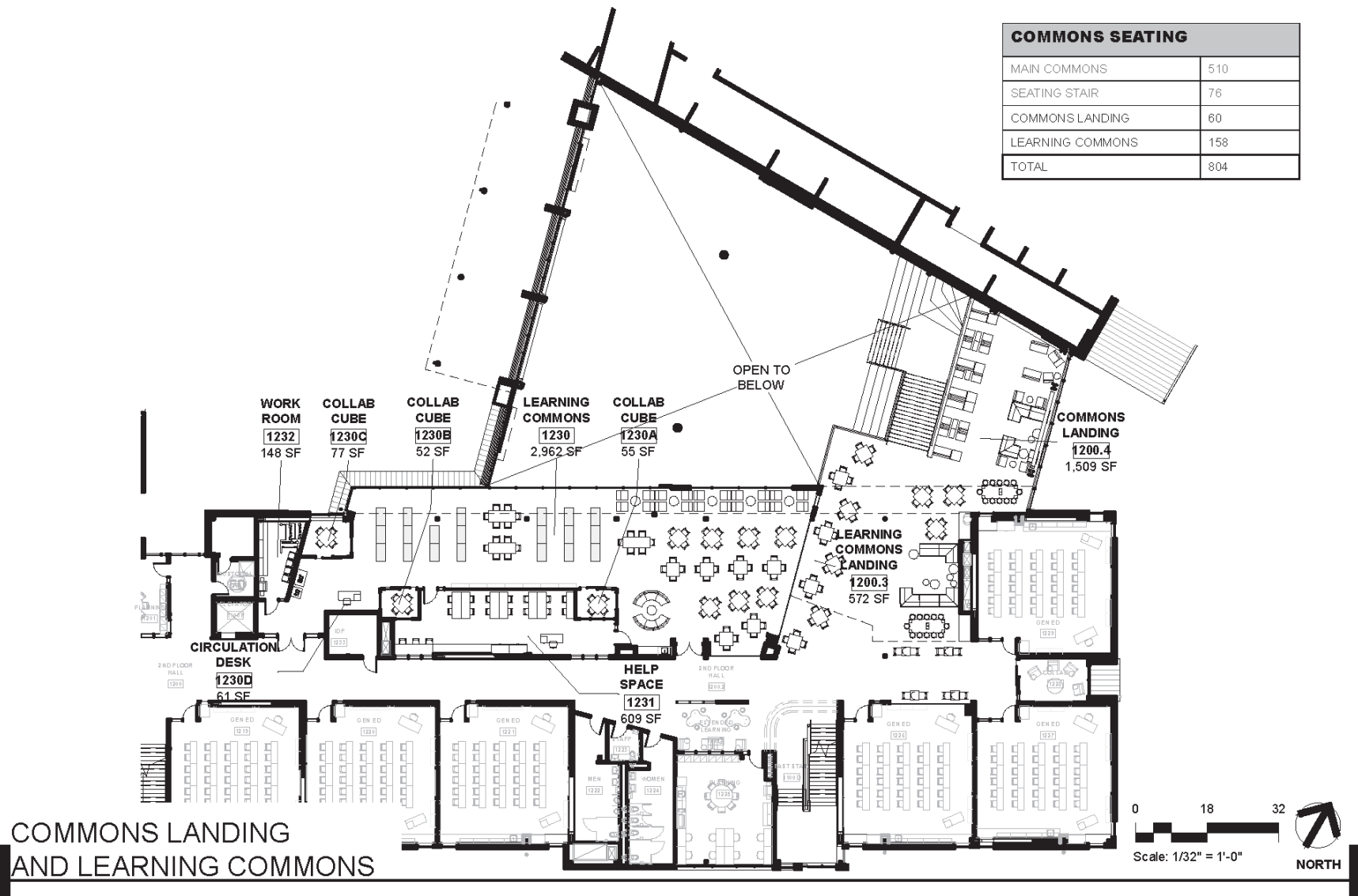
LEVEL 3

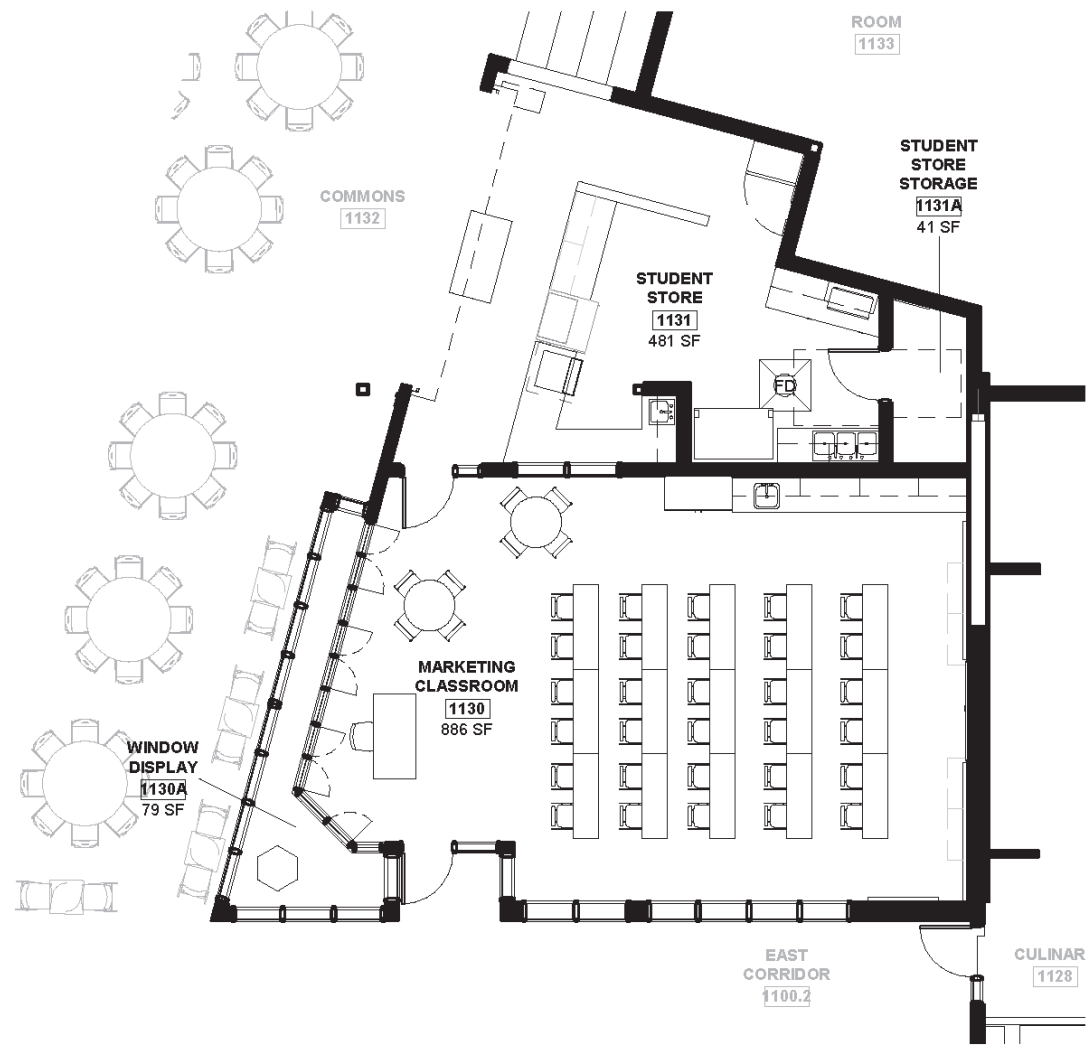




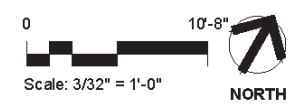
COMMONS



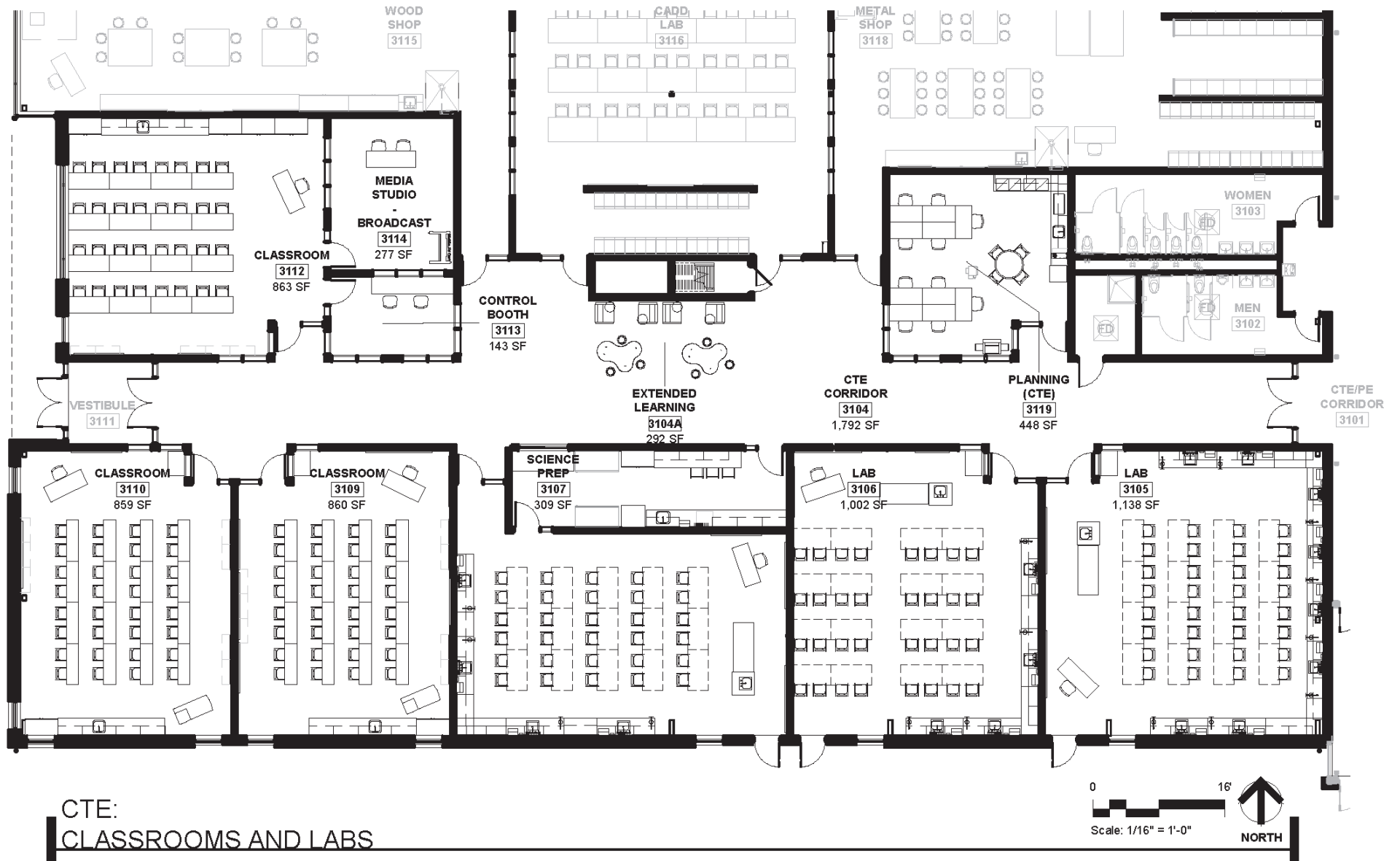




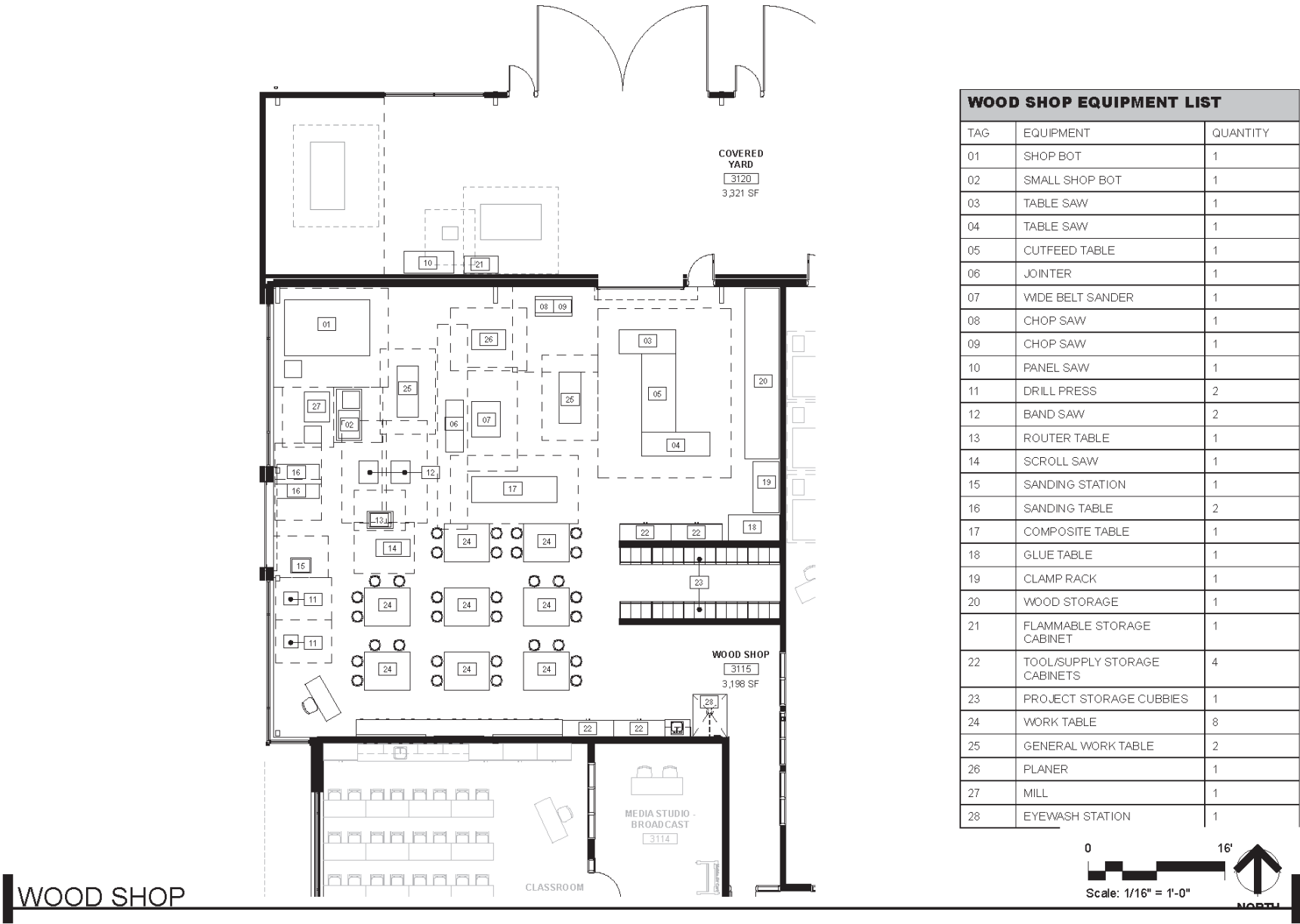
STUDENT STORE AND  
MARKETING CLASSROOM

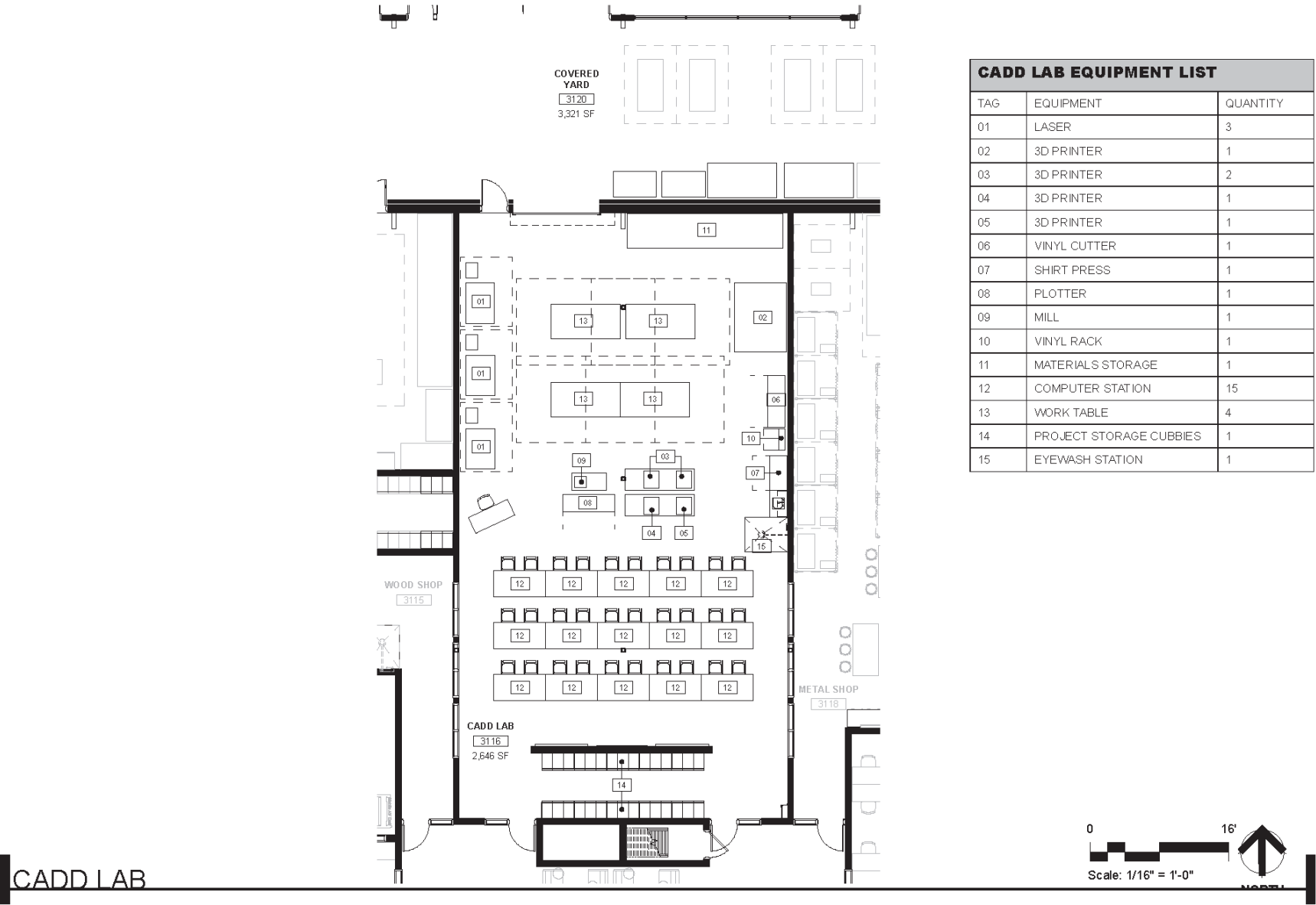


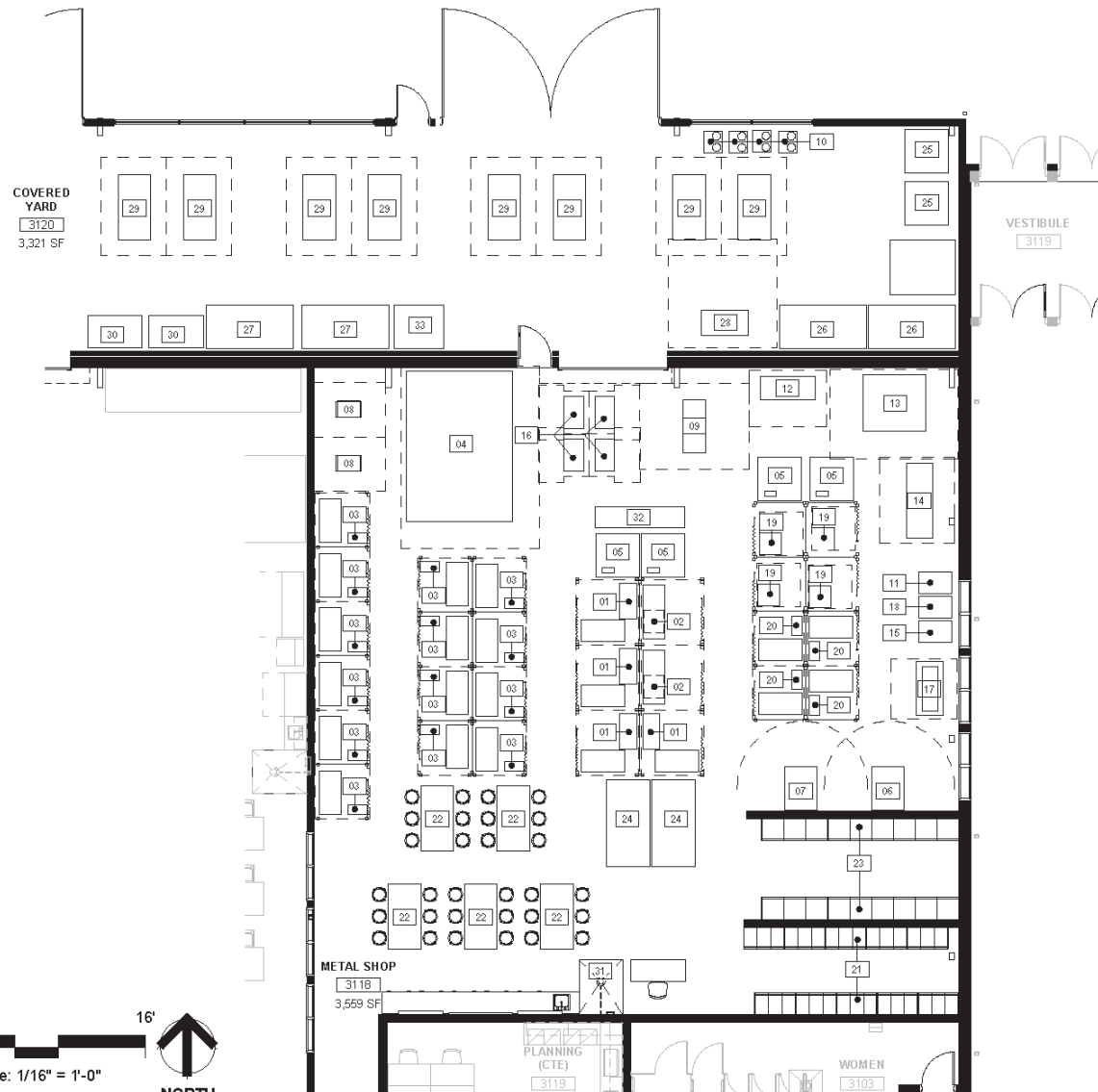
## S5 / FF&E Plans









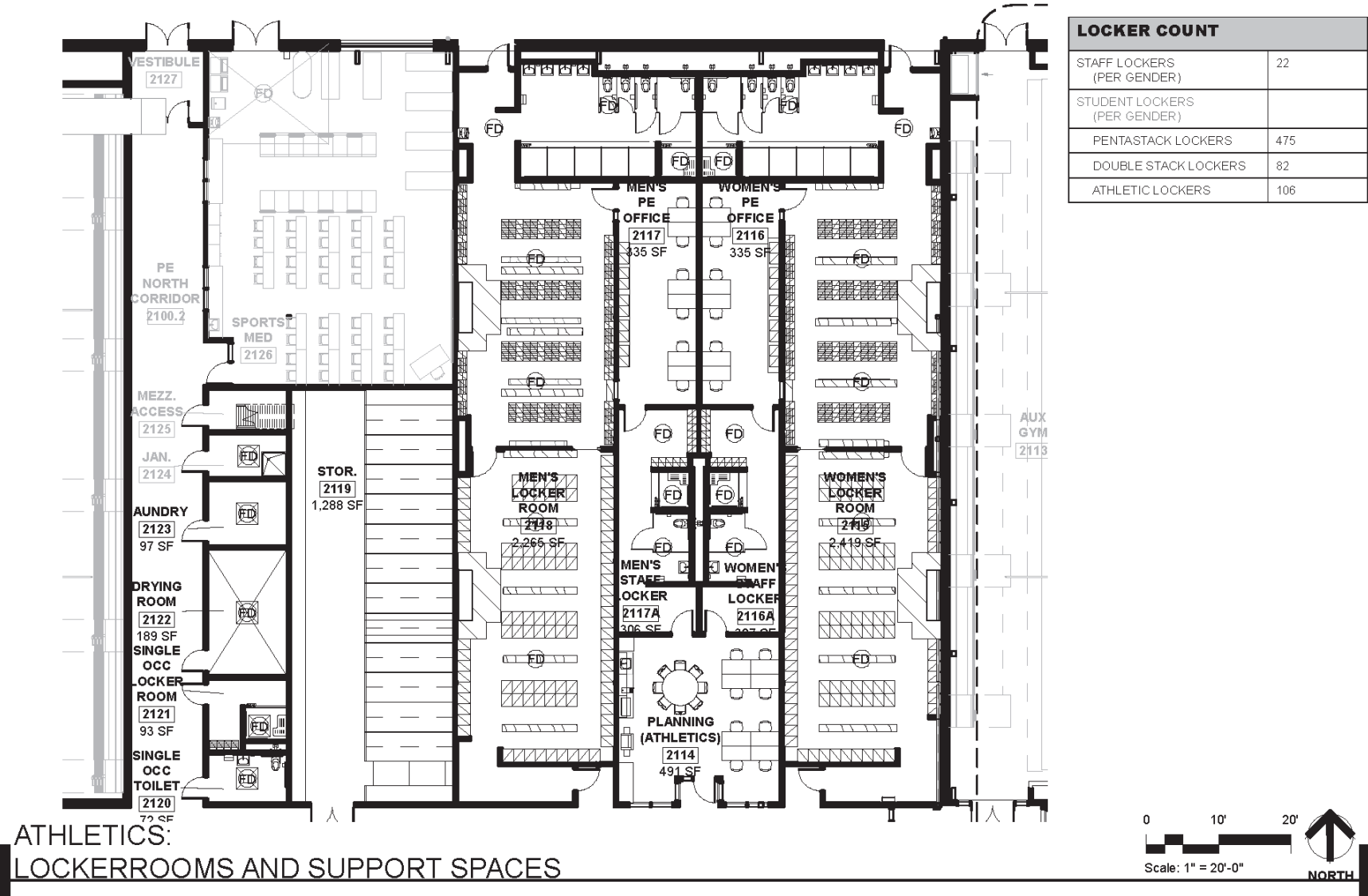


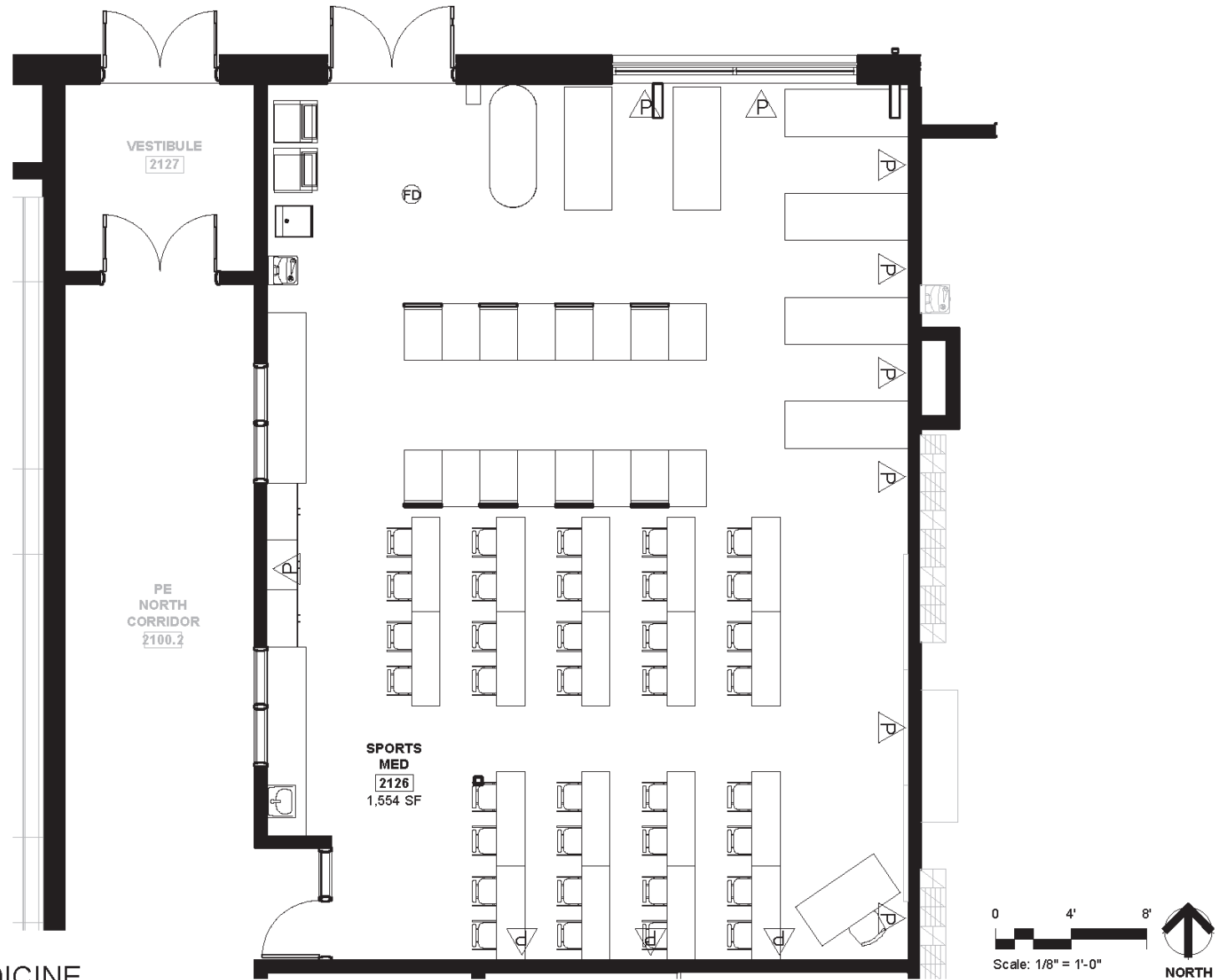
### METALS SHOP EQUIPMENT LIST

TAG	EQUIPMENT	QUANTITY
01	MIG WELDER	4
02	ALUM WELDER	2
03	ARC/MIG/TIG WELDER	14
04	PLASMA TABLE	1
05	PLASMA CUTTER TABLE	4
06	METAL ROLLER/BENDER	1
07	METAL ROLLER/BENDER	1
08	DRILL PRESS	2
09	BAND SAW	1
10	FUEL TANK CART	4
11	GAS FORGE	1
12	LATHE	1
13	METAL MILL	1
14	METAL BRAKE	1
15	COOLING TANK	1
16	BENCH GRINDER	4
17	SLIP ROLLER	1
18	ROD HEATER	1
19	CUT TABLE (TORCHES)	4
20	TIG WELDER	4
21	PROJECT STORAGE CUBBIES	1
22	STUDENT WORK TABLE	5
23	STUDENT LOCKERS	1
24	TOOLBOXES	2
25	GAS/OIL STORAGE	2
26	ENGINE STORAGE	2
27	ENGINE TOOLBOXES	2
28	CHOP SAW	1
29	ENGINE TABLES	8
30	PORTABLE VENTILATIONS	2
31	EYEWASH STATION	1
32	WELDER/TORCH STORAGE CART	1
33	MIG WELDER STORAGE CART	1

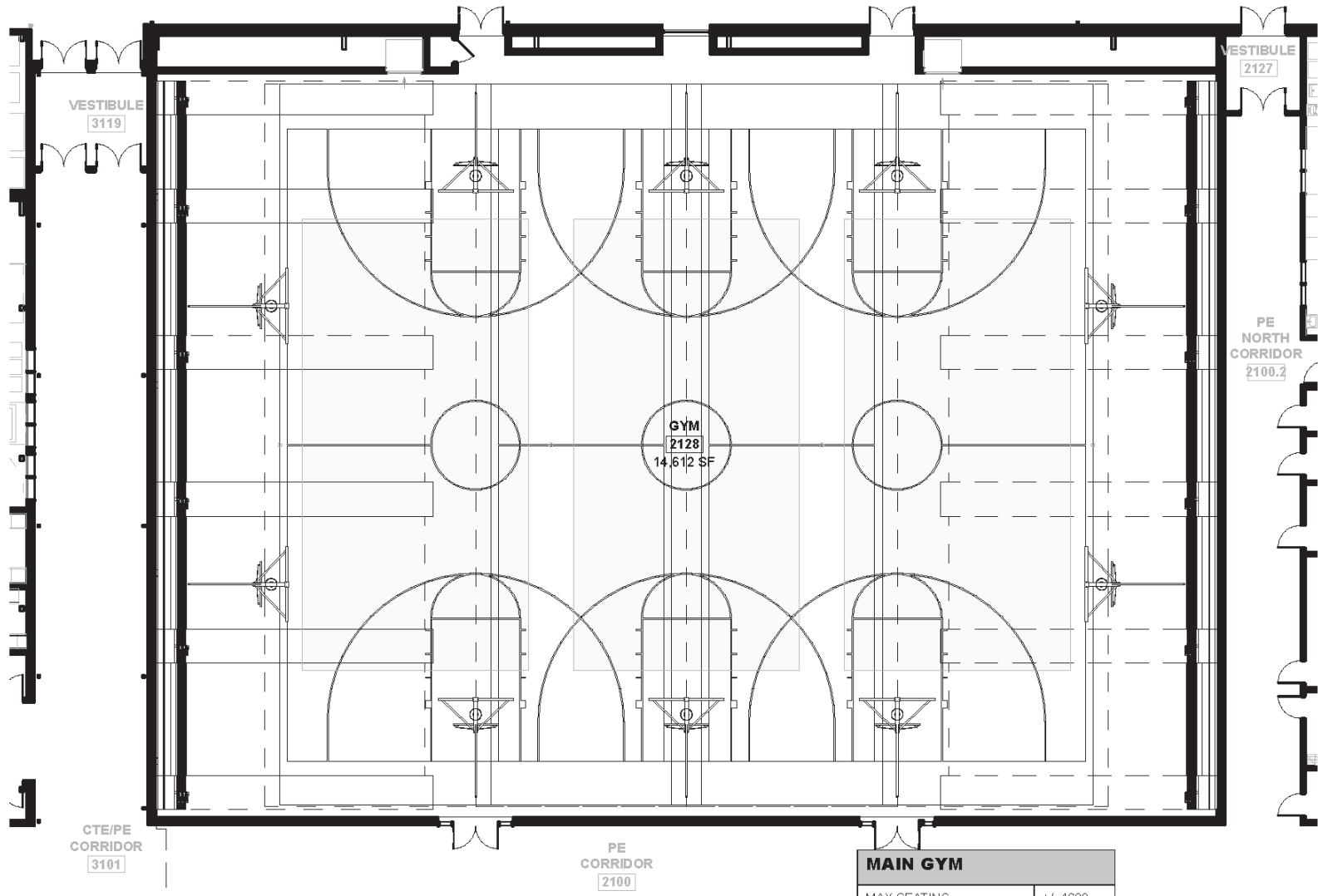
## METAL SHOP



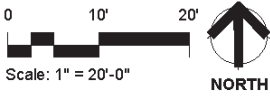




SPORTS MEDICINE



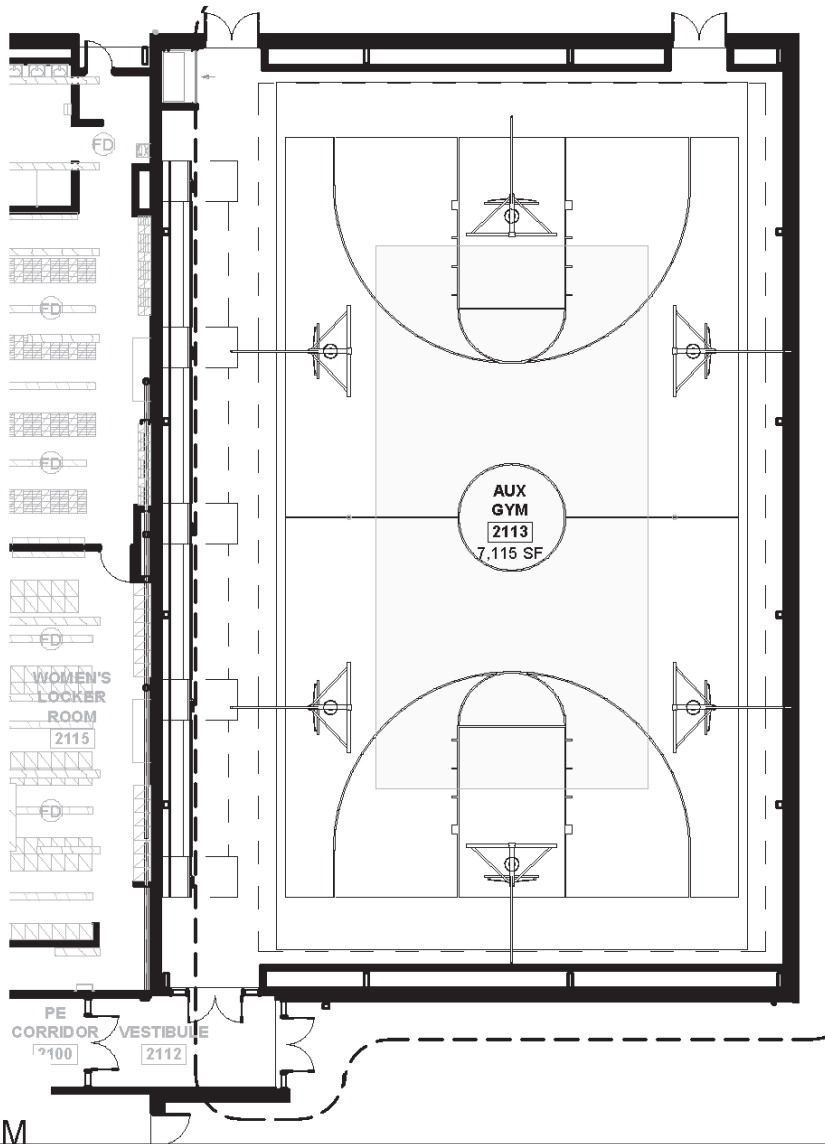
MAIN GYM	
MAX SEATING	+/- 1600
BASKETBALL COURTS	3
BASKETBALL HOOPS	10
VOLLY BALL COURTS	3



MAIN GYMNASIUM

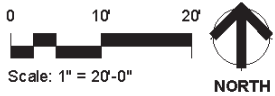




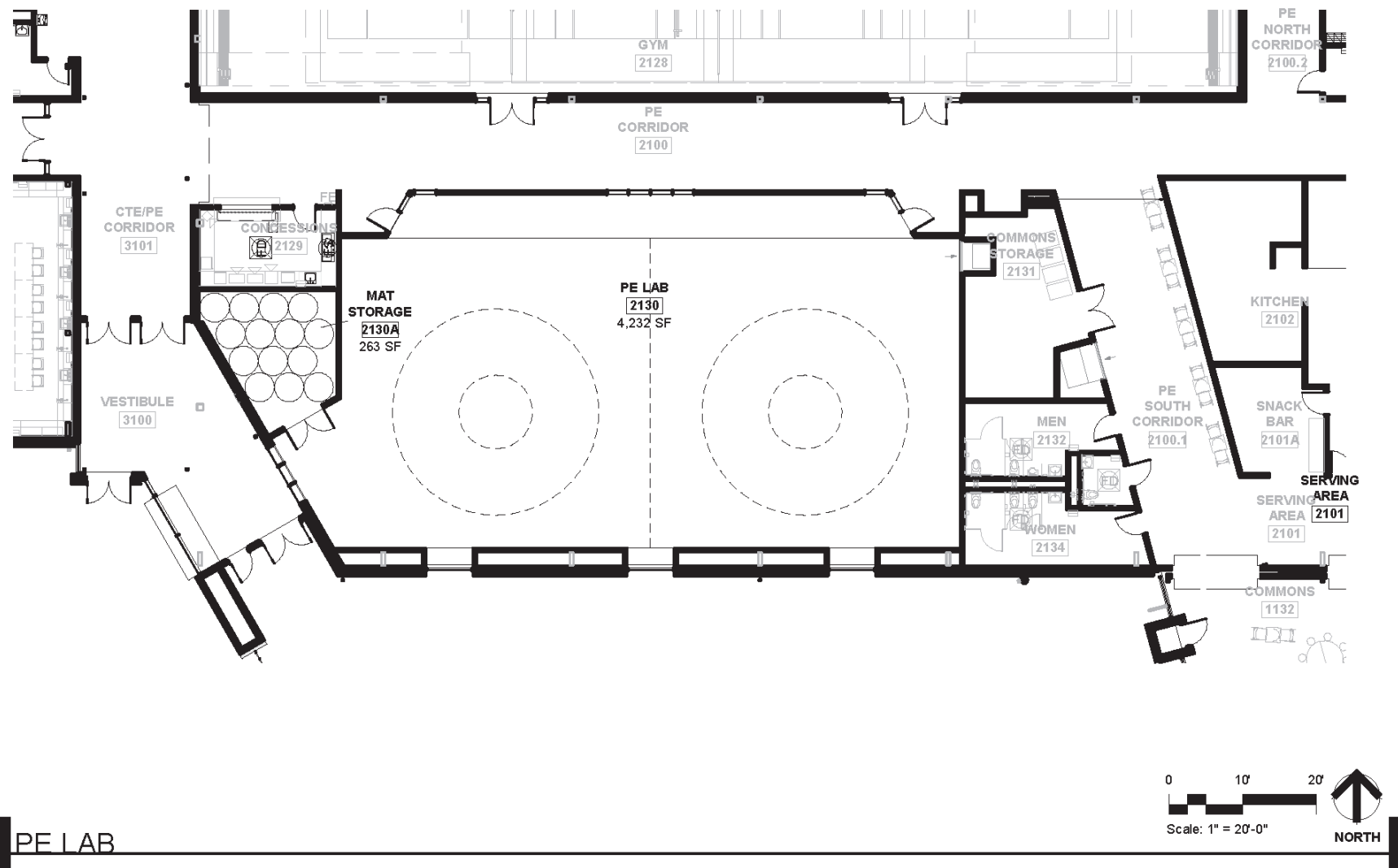


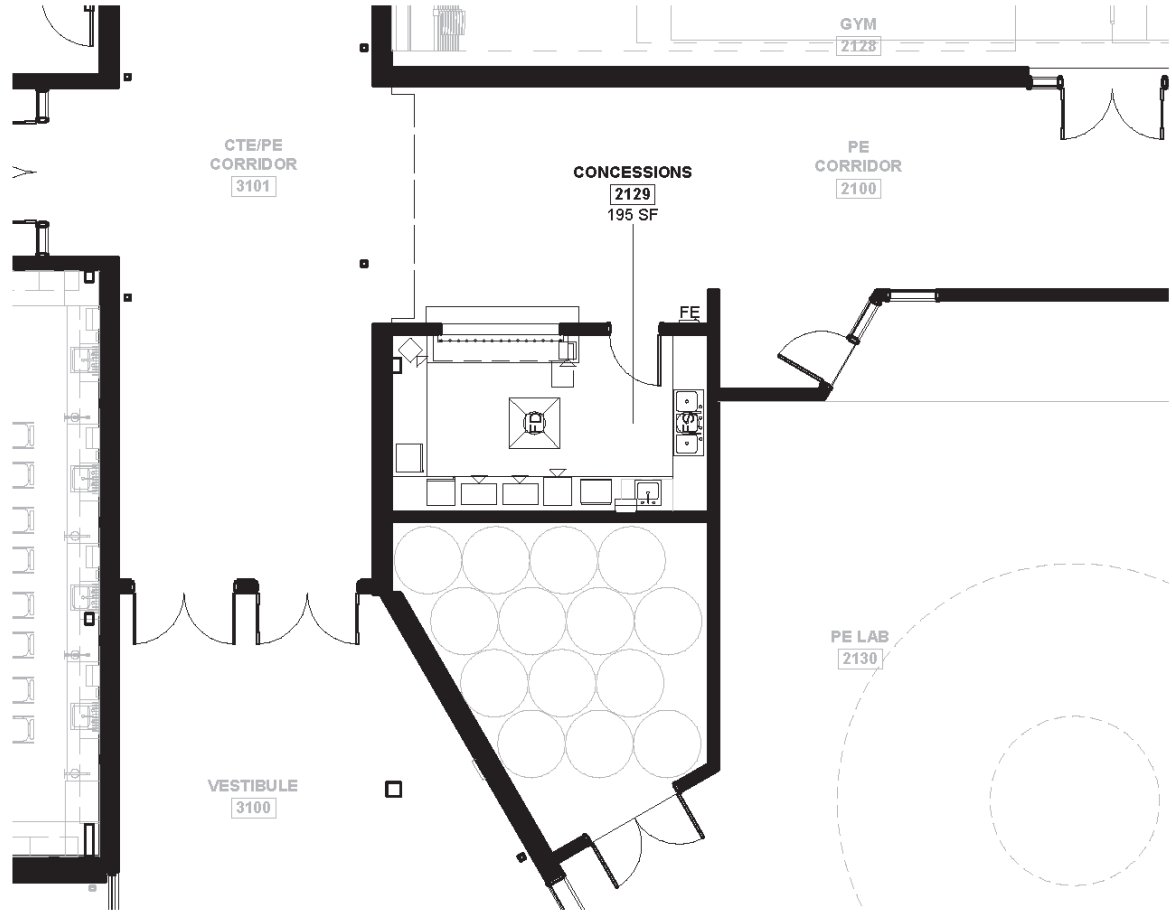
AUX GYM	
MAX SEATING	+/- 172
BASKETBALL COURTS	1
BASKETBALL HOOPS	6
VOLLY BALL COURTS	1

ALTERNATE-1  
AUXILIARY GYMNASIUM

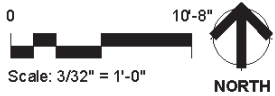


S5 / FF&E Plans

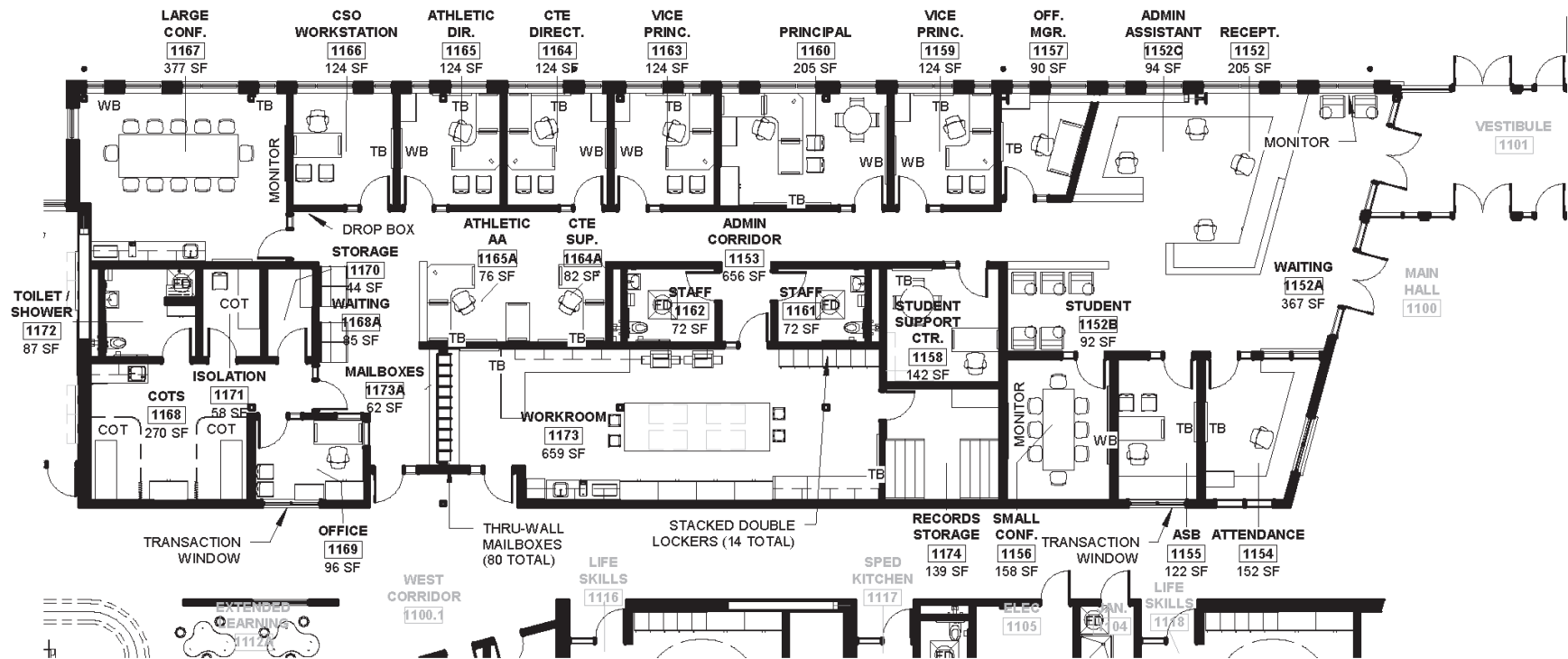




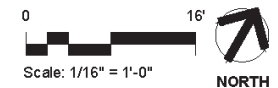
CONCESSIONS



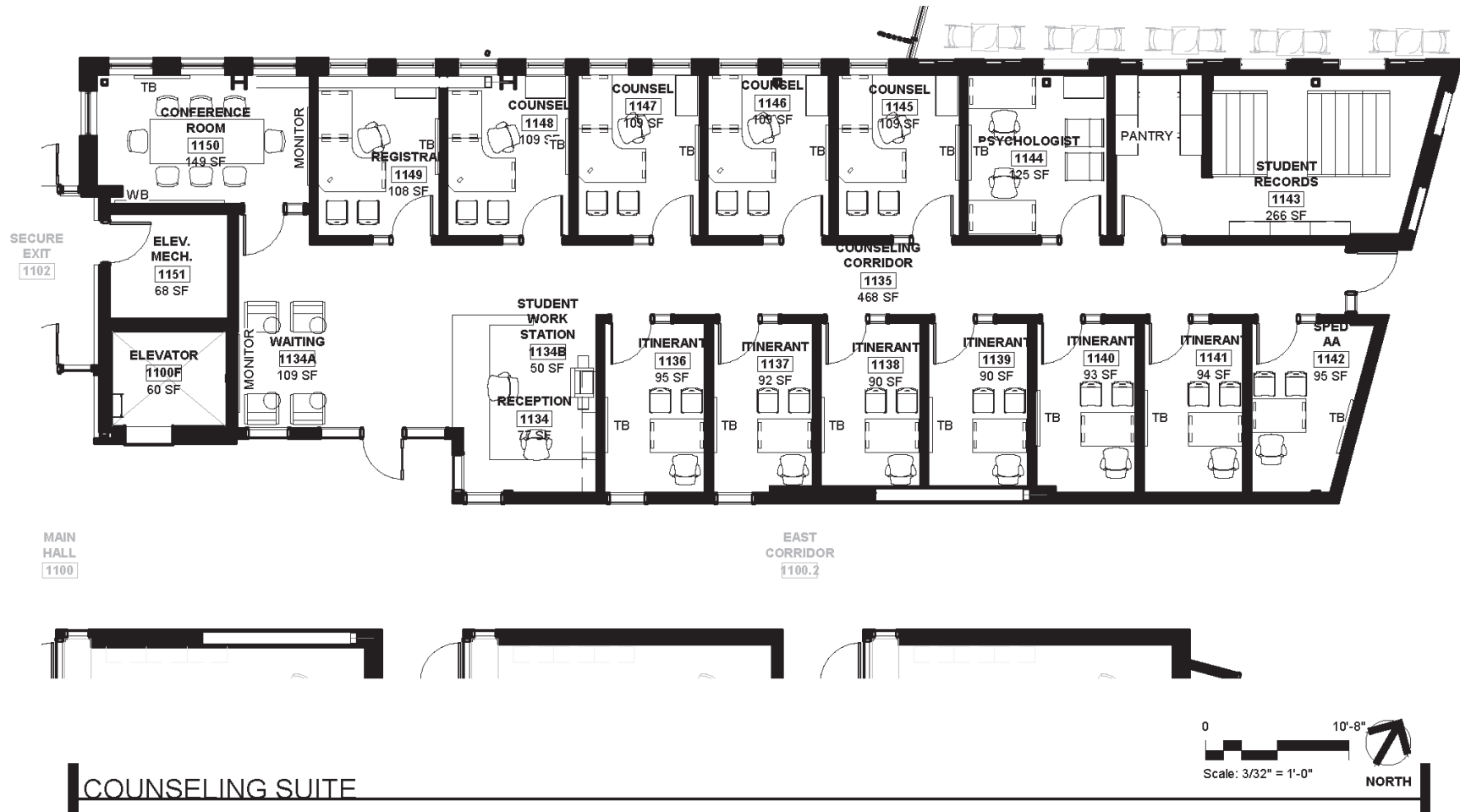
## S5 / FF&E Plans



ADMINISTRATION SUITE  
AND NURSES OFFICE

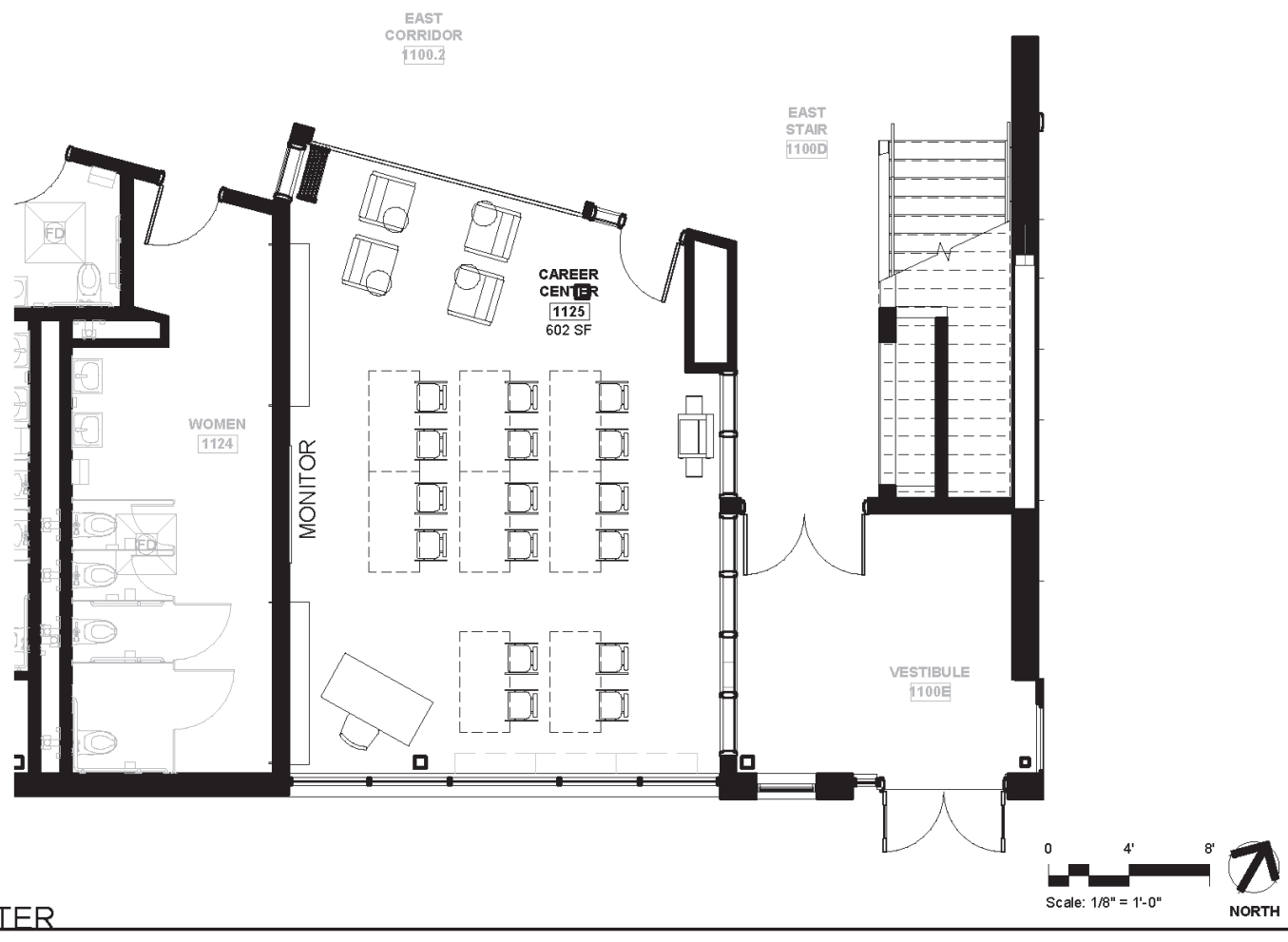


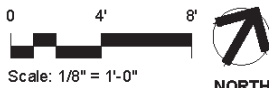
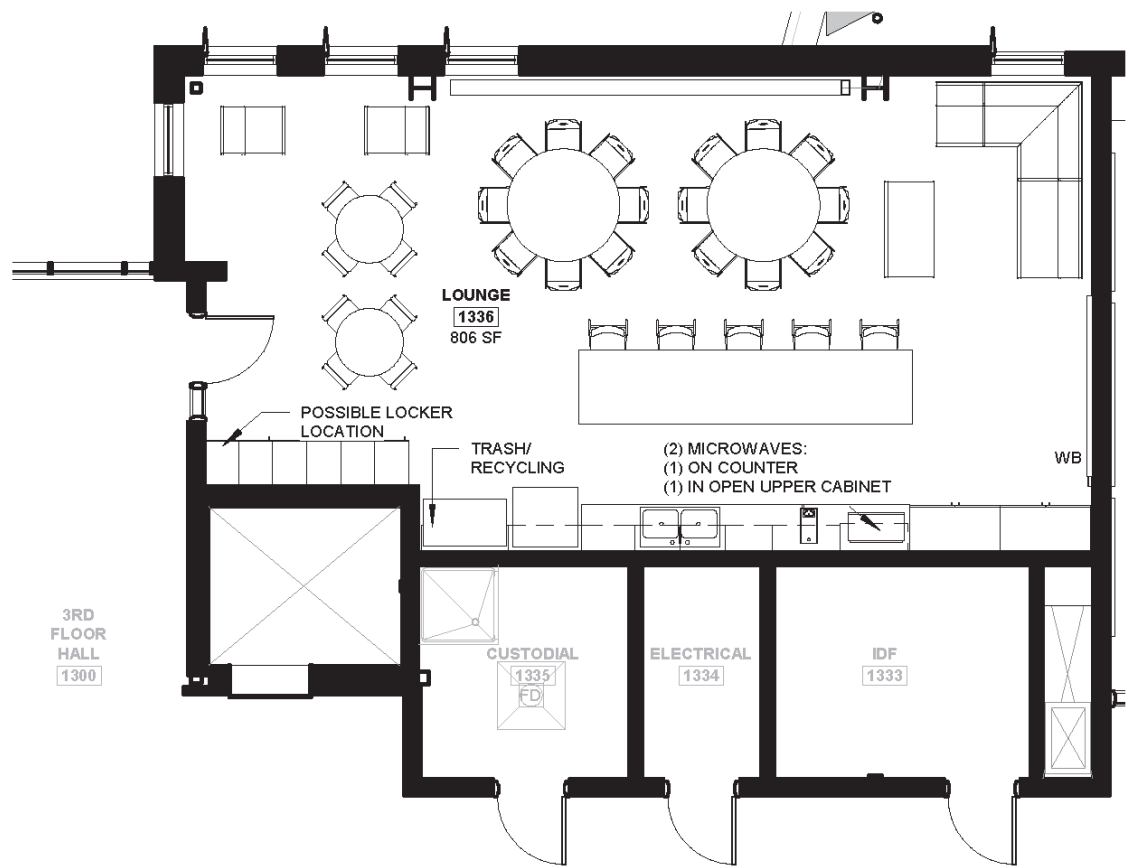




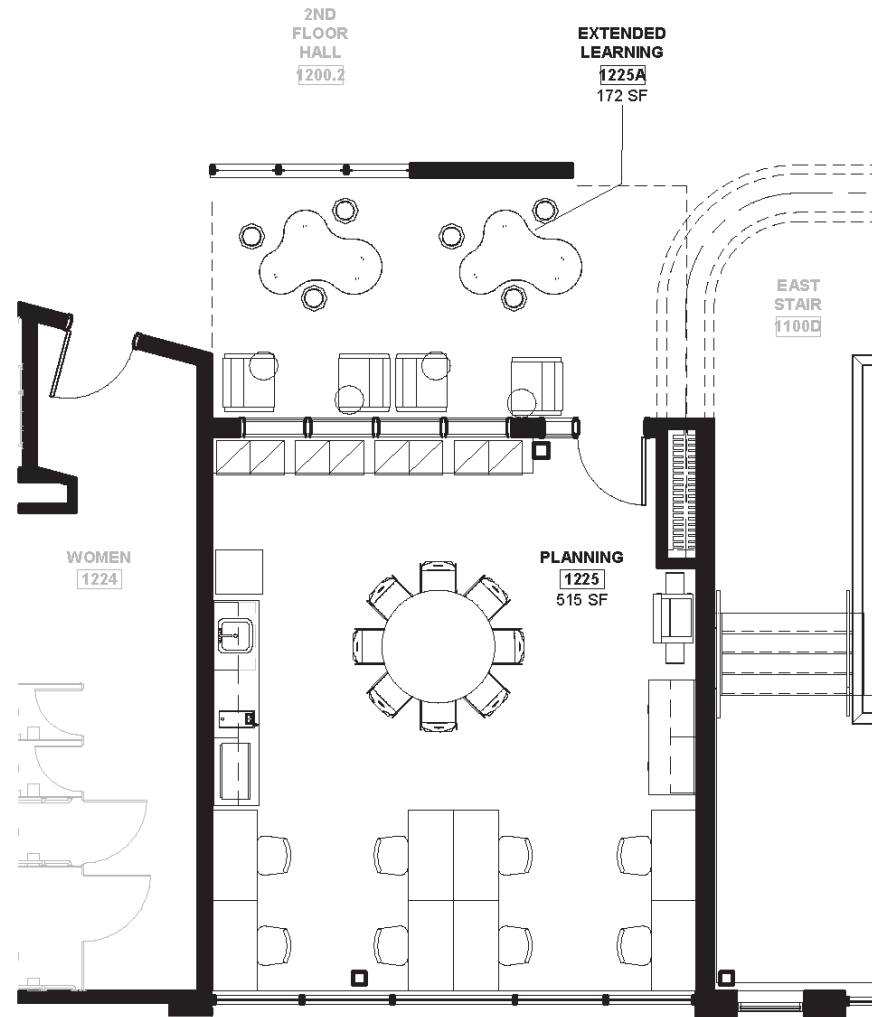
## COUNSELING SUITE

## S5 / FF&E Plans

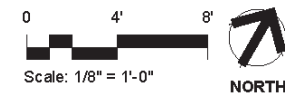




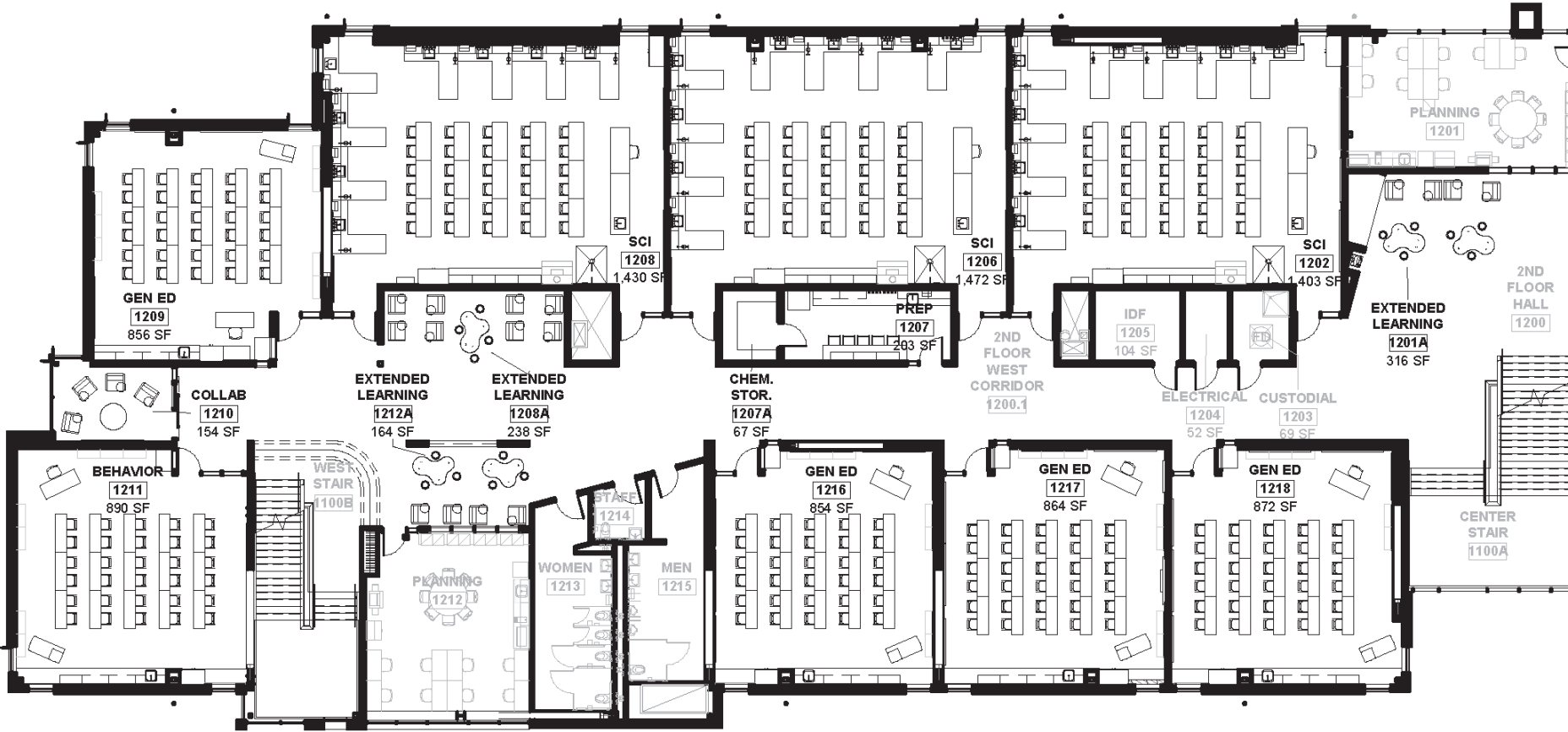
## TEACHER LOUNGE



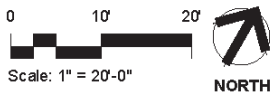
TYPICAL TEACHER PLANNING  
AND EXTENDED LEARNING



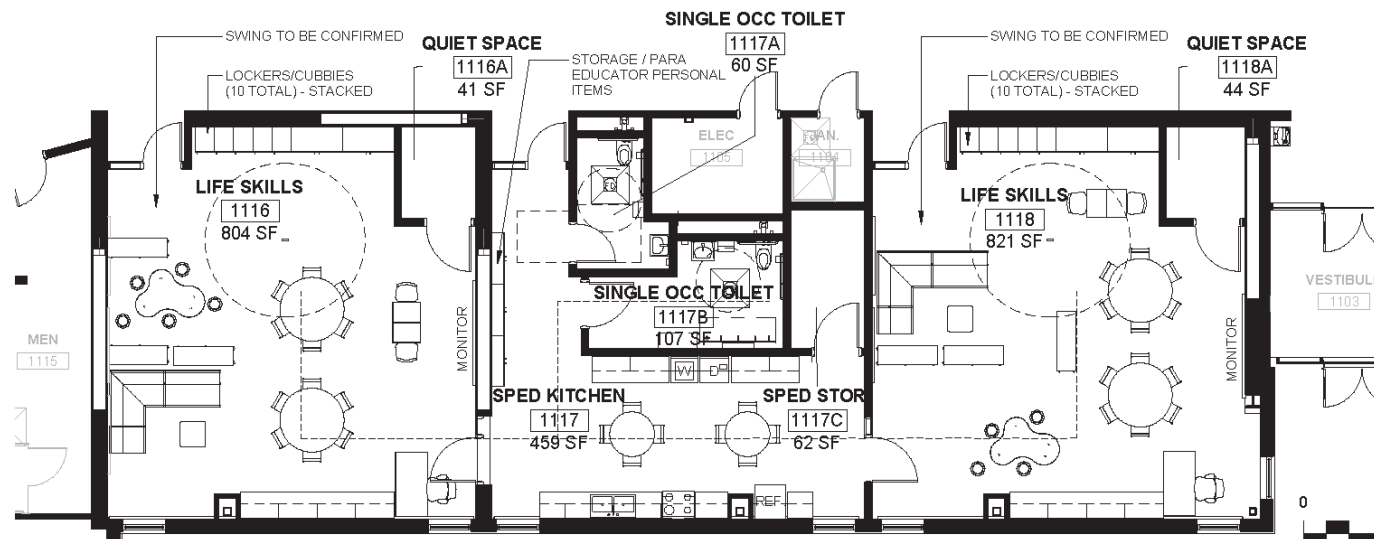
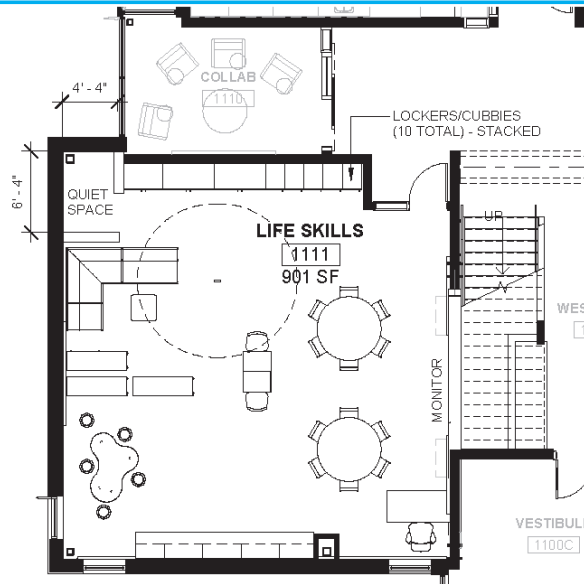




## CLASSROOMS AND SCIENCE LABS

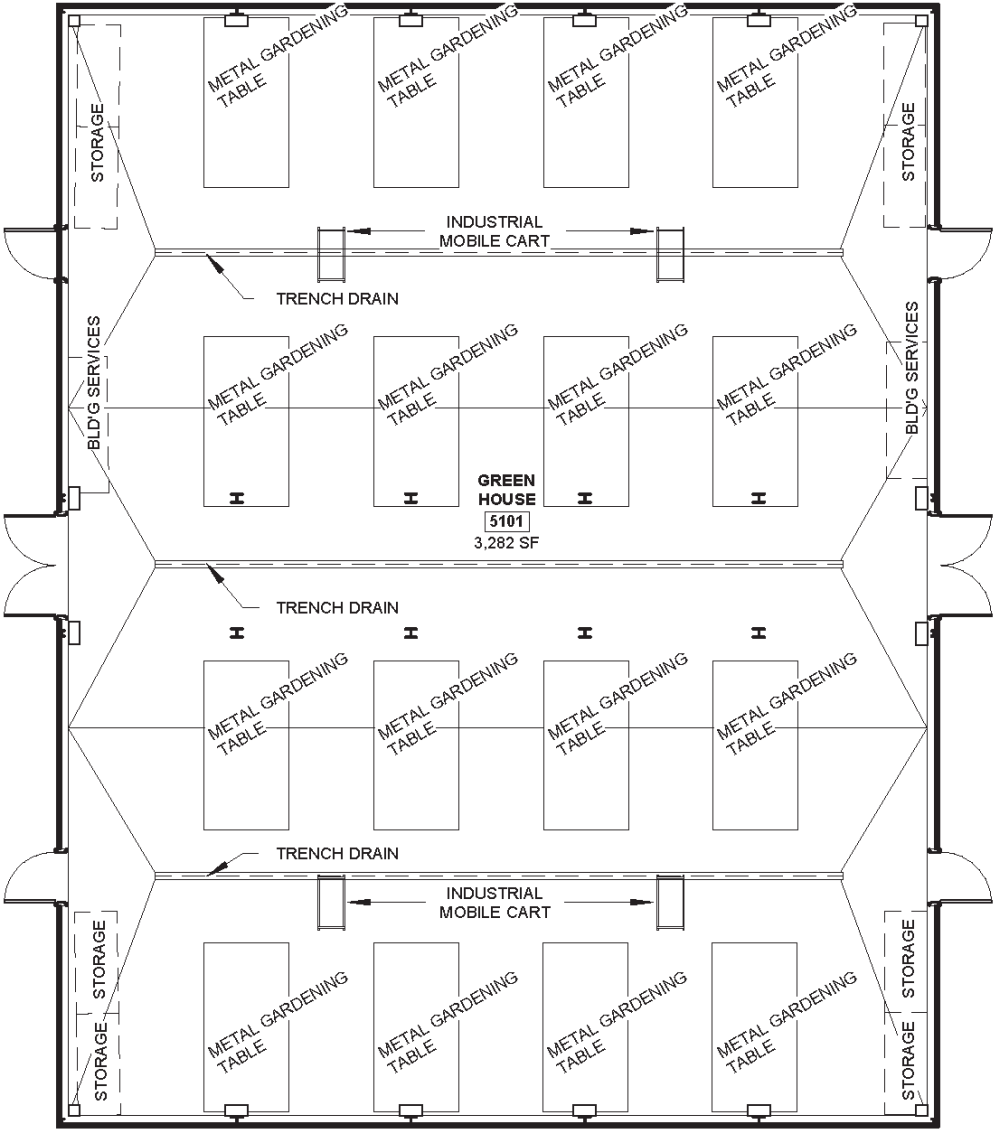


## S5 / FF&E Plans

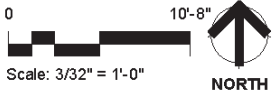


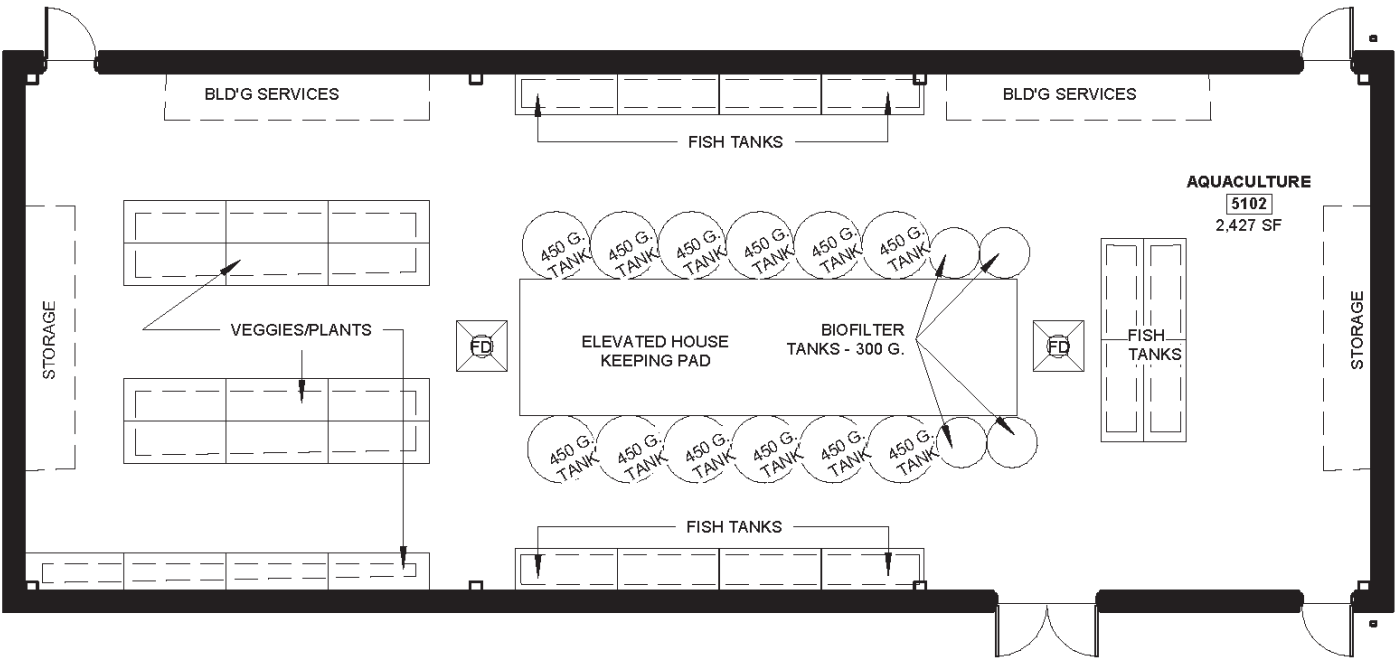
**SPECIAL EDUCATION**



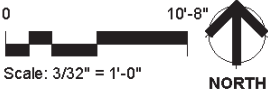


ALTERNATE-2  
GREENHOUSE





ALTERNATE-3  
AQUACULTURE





# S6 | WSSP Checklist



## S6 / WSSP Checklist

Washington Sustainable Schools Protocol							
Category	Group	Credit Number	Credit Name	Possible Points	Yes	No	Maybe
Site 23 points	1) Selection & Use	S1.0	Code Compliance	R	R		
		S1.1	Sensitive Areas	1	1		
		S1.2	Greenfields	1	1		
		S1.3	Central Location	1	1		
		S1.4	Joint Use of On-Site Facilities	1-2	1		
		S1.5	Joint Use of Off Site Facilities	1		1	
		S1.6	Minimize Site Disturbance - Building	2	2		
	2) Transportation	S2.1	Public Transportation	1		1	
		S2.2	Bicycle Lanes & Security	1			1
		S2.3	Electric Vehicle Charging Stations	1-2		1	1
		S2.4	Minimize Parking	1			1
	3) Stormwater Management	S3.0	Construction Stormwater Pollution Prevention	R	R		
		S3.1	On-site Stormwater Management and Flow Control	R-1	R	1	
		S3.2	Stormwater Treatment	R-1	R	1	
		S3.3	Soil Management	1	1		
	4) Outdoor Surfaces	S4.1	Outdoor Learning Spaces	2	1		
		S4.2	School Gardens	1-2	1		1
		S4.3	Reduce Heat Island - Site	1		1	
		S4.4	Reduce Heat Island - Roof Design	1	1		
	5) Outdoor Lighting	S5.1	Light Pollution Reduction	1	1		
Total possible				23	11	6	4



Washington Sustainable Schools Protocol							
Category	Group	Credit Number	Credit Name	Possible Points	Yes	No	Maybe
Water  10 points	1) Outdoor Systems	W1.0	Landscape Water Use Budget	R	R		
		W1.1	Irrigation Water Reduction (50%, 100%)	1-2	2		
		W1.2	Control Irrigation Water Use	1		1	
		W1.3	Irrigation System Testing and Training	1		1	
	2) Indoor Systems	W2.0	Lead-Free Potable Water System	1	1		
		W2.1	Potable Water Use Reduction for Sewage (25%, 45%)	1-2	1	1	
		W2.2	Potable Water Use Reduction (20%, 30%, 40%)	1-3	2	1	
Total possible				10	6	4	0
	1) Waste Reduction & Efficient Material Use	MW1.0	Storage and Collection of Recyclables and Compostables	R	R		
		MW1.1	Construction Site Waste Management (50%, 75%)	1-2	2		
		MW1.2	Building Reuse - Structure/Shell (50%, 75%, 95%)	1-3			3
		MW1.3	Building Reuse - Interior Non-Structural Elements (50%)	1		1	
		MW1.4	Materials Reuse (5%, 10%)	1-2		2	
	2) Sustainable Materials	MW2.1	Recycled Content (10%/4 mtl's, 20%/8 mtl's)	1-2		1	1
		MW2.2	Rapidly Renewable Materials	1	1		
		MW2.3	Certified Wood (50%, Chain of Custody)	1-2	1		1
		MW2.4	Regional/Local Materials	1-2	1		2
		MW2.5	Environmentally Preferable Products - Multiple Attribute	1-2	1		1
		MW2.6	Environmental Product Declaration	2-7		4	3
		MW2.7	Building Materials Health Product Disclosure	1	1		
Total possible				25	7	8	11

## S6 / WSSP Checklist

Washington Sustainable Schools Protocol							
Category	Group	Credit Number	Credit Name	Possible Points	Yes	No	Maybe
Energy  60 points	1) Efficiency	E1.0	Minimum Energy Performance				
		E1.0.1	Energy Code Minimum	R	R		
		E1.0.2	Energy Star Certified Equipment	R	R		
		E1.1	Superior Energy Performance - Prescriptive Component Design	2-10	2	4	4
		E1.2	Superior Energy Performance - Whole Building Design	8-20	17	3	
		E1.3	Zero Net Energy	35		35	
	2) Building Automation	E2.0	Audio and Visual Systems Control	R	R		
		E2.1	Daylight Responsive Controls	R	R		
		E2.2	HVAC Controls and Operable Windows	1		1	
		E2.3	Occupancy Controls				
		E2.3.1	Occupancy Sensor-based Controls	1	1		
		E2.3.2	Occupancy Sensor-based Control for Temperature & Airflow	1	1		
		E2.4	Demand Control Ventilation	1		1	
		E2.5	Exterior Lighting Motion Detection	2	2		
	3) Alternative Energy	E3.1	On-Site Renewable Energy				
		E3.1.1	On-Site Renewable Energy	2-8		8	
		E3.1.2	Solar Ready	1		1	
		E3.1.3	Service Water Heating	2		2	
		E3.1.4	Zero Net Energy Capable	3		3	
		E3.2	Combined Heat & Power	4		4	



Energy (cont.)	4) Commissioning	E4.0	Fundamental Commissioning	R	R		
		E4.1	Enhanced Commissioning				
		E4.1.1	Commissioning Review	1	1		
		E4.1.2	Verification and Assurances	1	1		
		E4.1.3	Systems Manual	1			1
	5) Metering & Managment	E5.0	Minimum Energy Metering	R	R		
		E5.1	Energy Metering - Other				
		E5.1.1	Energy Metering System - Not Code Required	4		4	
		E5.1.2	Additional Use Metering	2		2	
		E5.1.3	Energy Use Metering Display	2		2	
		E5.2	Energy Storage	2		2	
		E5.3	Automated Demand Response				
		E5.3.1	Manage Peak Demand	2		2	
		E5.3.2	Future Demand Response	1		1	
	Total possible			60	25	75	5



## S6 / WSSP Checklist

Washington Sustainable Schools Protocol							
Category	Group	Credit Number	Credit Name	Possible Points	Yes	No	Maybe
Indoor Environmental Quality  36 points	1) Daylighting	IEQ1.0	Permanent Shading	R-1	1		
		IEQ1.1	Outdoor View Windows	R-1	1		
		IEQ1.2	Daylighting Classrooms	1-4	3		1
	2) Electric Lighting Quality	IEQ2.0	Electric Lighting Quality				
		IEQ2.0.1	Electric Lighting Quality	R	R		
		IEQ2.0.2	Electric Lighting Dimming	1	1		
		IEQ2.0.3	Electric Lighting Luminaire Color	1		1	
	3) Indoor Air Quality	IEQ3.0	Min. Requirements Ventilation, Filtration, & Moisture Control				
		IEQ3.0.1	Permanent Ventilation	R	R		
		IEQ3.0.2	Increased Ventilation	1			1
		IEQ3.0.3	Evaluate Envelope	1	1		
		IEQ3.1	Low-Emitting Interior Finishes	1-6	4		2
		IEQ3.2	Low-Emitting Furniture	1			1
		IEQ3.3	Source Control	3	3		
		IEQ3.4	Ducted HVAC Returns	1		1	
		IEQ3.5	Particle Arrestance Filtration	1-2	2		
		IEQ3.6	Construction IAQ Management				
		IEQ3.6.1	During Construction	1		1	
		IEQ3.6.2	After Construction	1	1		
		IEQ3.7	Indoor Air Monitoring	2		2	



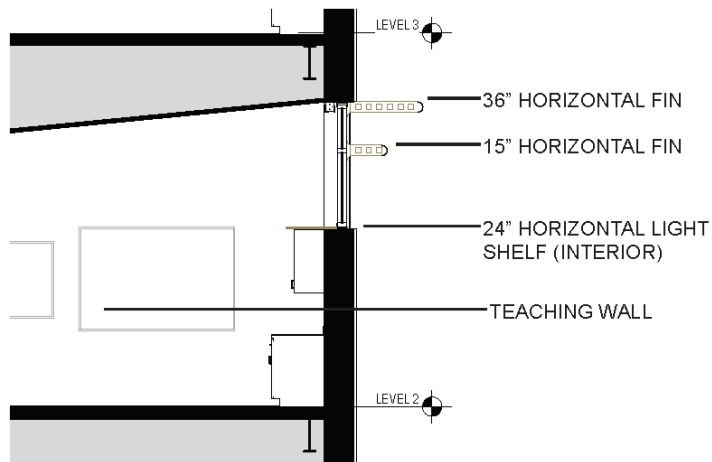
Indoor Environmental Quality (cont.)	4) Acoustics	IEQ4.0	Minimum Acoustic Performance	R	R		
		IEQ4.1	Improved Acoustical Performance				
		IEQ4.1.1	Reduced Unoccupied Classroom Noise All Classrooms	1		1	
		IEQ4.1.2	STC 50 All Classrooms	1		1	
		IEQ4.1.3	Gymnasium Reverberation Times	1		1	
		IEQ4.1.4	Multi-Purpose, Commons, Cafeteria Reverberation Times	1		1	
		IEQ4.2	Audio Enhancement	1	1		
	5) Thermal Comfort	IEQ5.0	Thermal Code Compliance	R	R		
		IEQ5.1	Radiant Heated Floors - K-5	2		2	
	6) User Controls	IEQ6.1	User Control - Windows	1	1		
		IEQ6.2	User Control - Temperature	1	1		
	Total possible			36	20	11	5

## S6 / WSSP Checklist

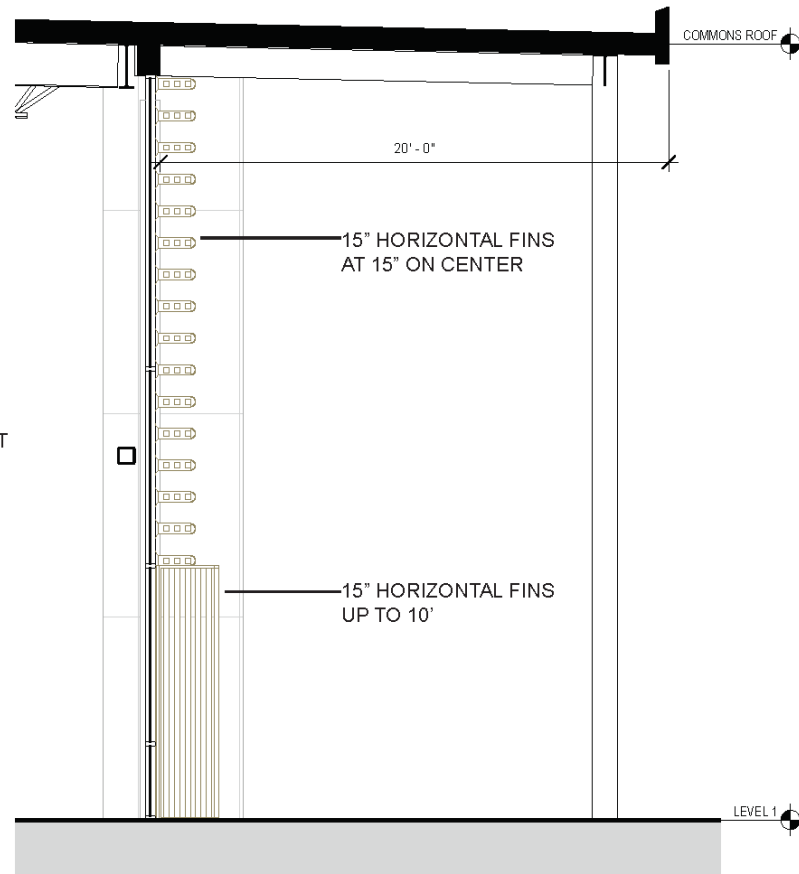
Washington Sustainable Schools Protocol							
Category	Group	Credit Number	Credit Name	Possible Points	Yes	No	Maybe
Integration, Education and Operations  43 points	1) Integration	IEO1.1	Integrated Design Workshop	1	1		
		IEO 1.2	Durability	1	1		
		IEO1.3	Faculty and Staff Changing and Shower Facilities	1			1
		IEO1.4	Innovation	1-2		2	
		IEO1.5	Biophilic Design	1-2	2		
		IEO1.6	Pursue Additional Funding Sources	2		2	
		IEO1.7	Safer Schools by Design	2	2		
	2) Education	IEO2.1	Green Building Learning	1-2	2		
	3) Operations	IEO 3.0	Operational Performance Monitoring	R	R		
		IEQ3.1	Post Occupancy Evaluation (POE)				
		IEO3.1.1	POE Occupant Survey	R	R		
		IEO3.1.2	Comprehensive POE	2		2	
		IEO3.2	ELCCA/LCCA				
		IEO3.2.1	ELCCA Required Facilities	R	R		
		IEO3.2.2	ELCCA Other Facilities	1		1	
		IEO3.2.3	ELCCA Update	1		1	
		IEO3.2.4	LCCA	1		1	
		IEO3.3	Monitoring-Based Commissioning	4		4	
		IEO3.4	Project or District Long Term Operations				
		IEO3.4.0	Asset Preservation Program (APP)-New Buildings	R	R		
		IEO3.4.1	Operations and Maintenance Staff Involvement	R	R		
		IEO3.4.2	Asset Preservation System (APS) on Modernizations	1		1	
		IEO3.4.3	Green Power and Carbon Offsets	1-2		2	
		IEO3.4.4	Resource Conservation and GHG Reduction Plan	1		1	



Integration, Education and Operations (cont.)	3) Operations (cont.)	IEO3.4.5	IAQ Management Plan	2		2	
		IEO3.4.6	Integrated Pest Management Program	2	2		
		IEO3.4.7	Transportation Options Program	1		1	
		IEO3.4.8	Operations and Maintenance Personnel Training	1-2		2	
		IEO3.4.9	Food Related Waste Management	1-2		2	
		IEO3.4.10	Wasted Food Reduction Program	1, 2-3		3	
		IEO3.4.11	Fuel Efficient Buses and Maintenance Vehicles	1	1		
		IEO3.4.12	Environmentally Preferable Supplies Purchasing	1		1	
		IEO3.4.13	Green Cleaning Policy and Program	1		1	
		IEO3.4.14	Green School Program	1		1	
Total possible				43	11	30	1
GRAND TOTAL Possible Points (Most points possible, not a total of all points listed above)				197	80	134	26
Minimum required for Washington Sustainable School Two-tier system:							
New Facility and New Building on Existing Facility							
For class I Districts: Minimum 66 points				For class II Districts: Minimum 58 points			
Modernization							
For class I Districts: Minimum 49 points				For class II Districts: Minimum 43 points			



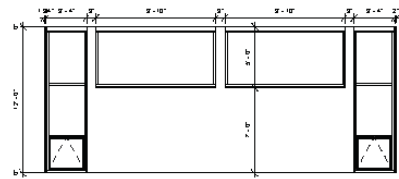
TYPICAL CLASSROOM SUN SHADING



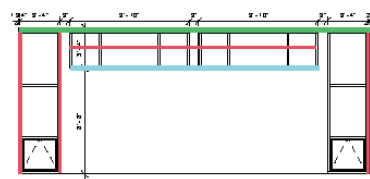
COMMONS SUN SHADING



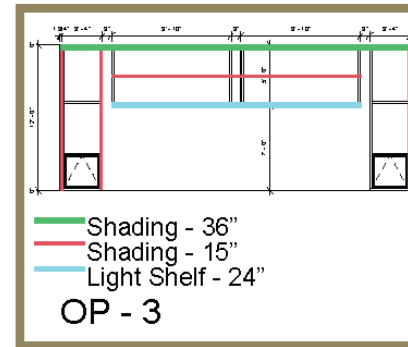
CLASSROOM SOUTH FACING



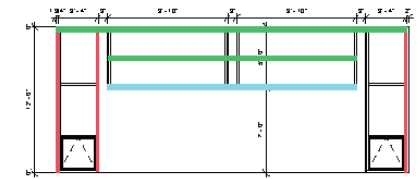
OP - 1



OP - 2



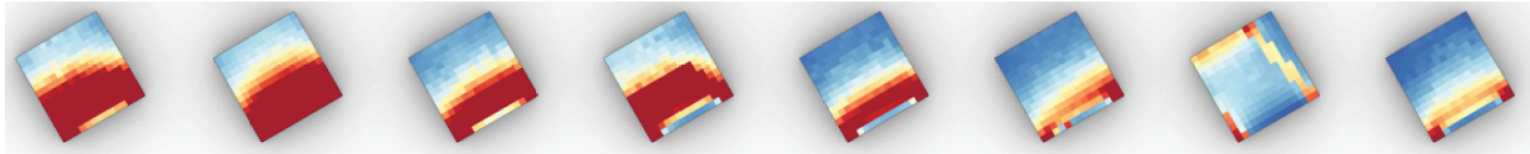
Selected Option



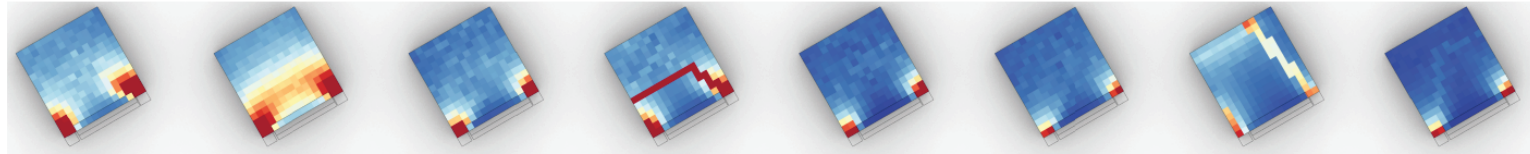
OP - 4

June 21st 9AM    June 21st 12PM    June 21st 3PM    Sept 21st 9AM    Sept 21st 12PM    Sept 21st 3PM    Dec 21st 9AM    Dec 21st 12PM

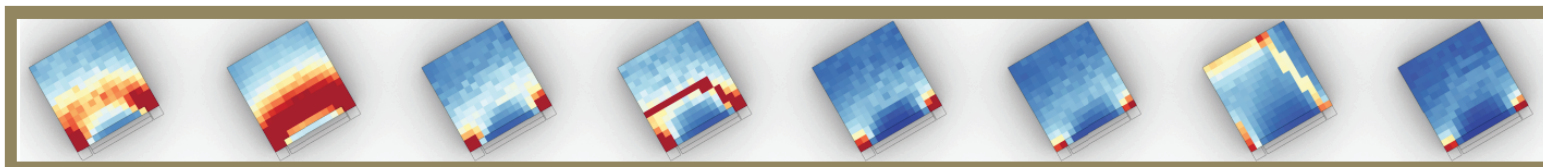
1



2

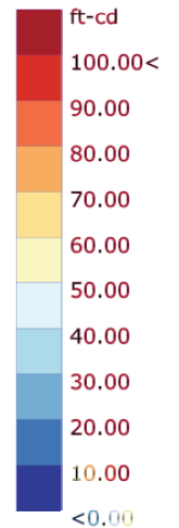
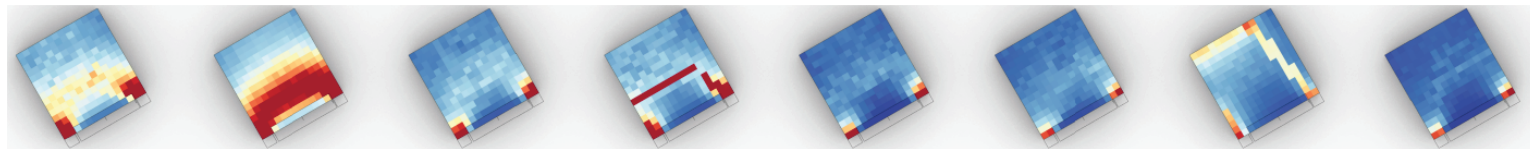


3

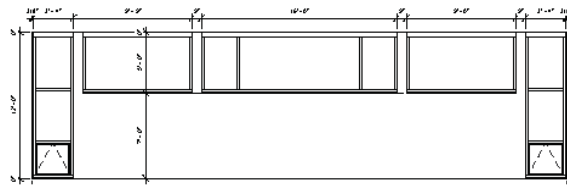


Selected Option: Prioritizing winter sun. Summer brightness can be controlled by shades.

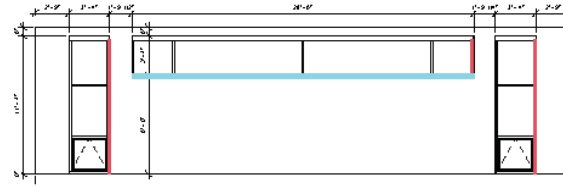
4



## S7 / Daylighting Studies



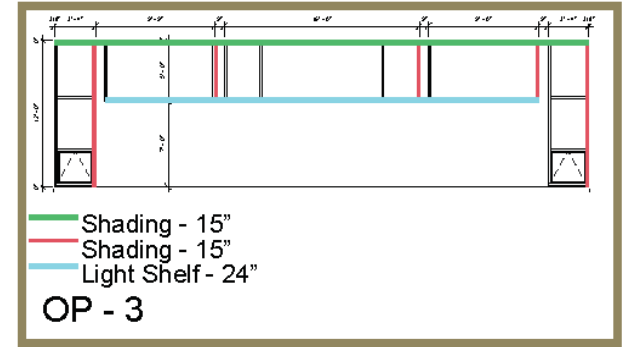
OP - 1



Shading - 15"  
Shading - 15"  
Light Shelf - 24"

OP - 2

### CLASSROOM NORTH FACING



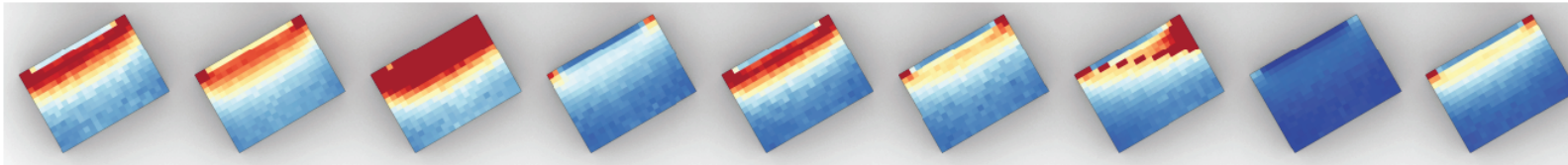
Shading - 15"  
Shading - 15"  
Light Shelf - 24"

OP - 3

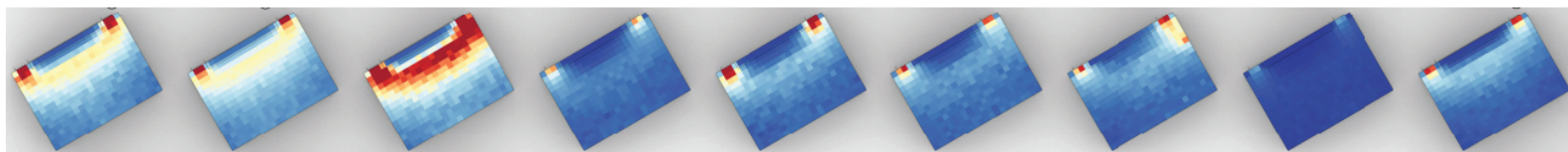
Selected Option

June 21st 9AM 6/21 @ 12PM 6/21 @ 3PM 9/21 @ 9AM 9/21 @ 12PM 9/21 @ 3PM 9/21 @ 5PM 12/21 @ 9AM 12/21 @ 12PM

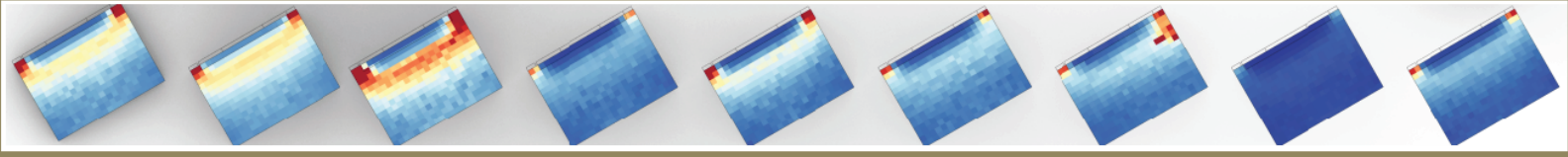
1



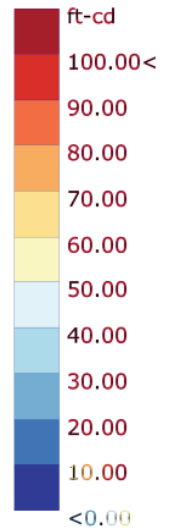
2



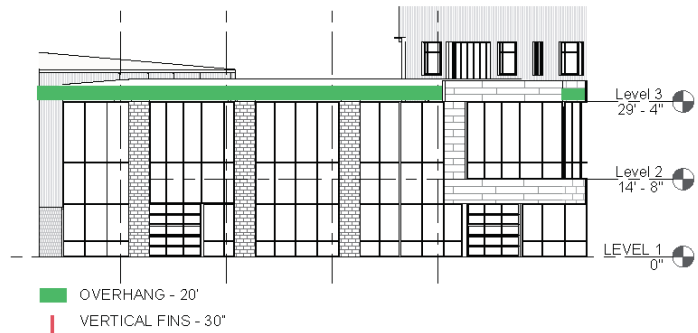
3



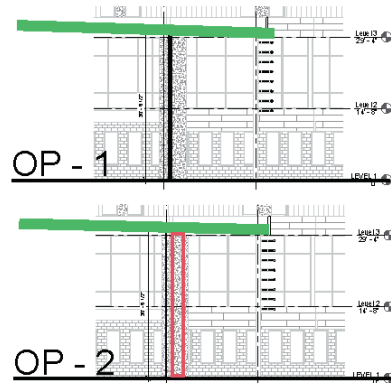
Selected Option



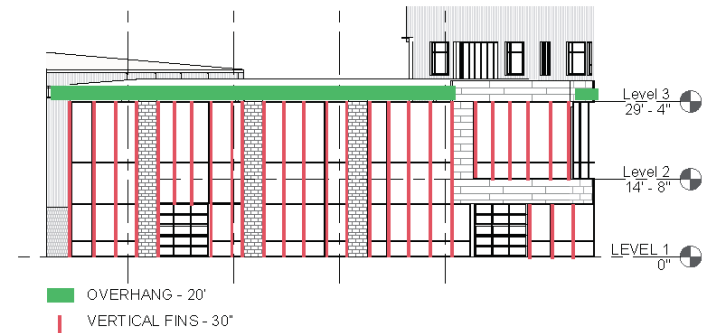
COMMONS WEST FACING



OP - 1 - No shading devices

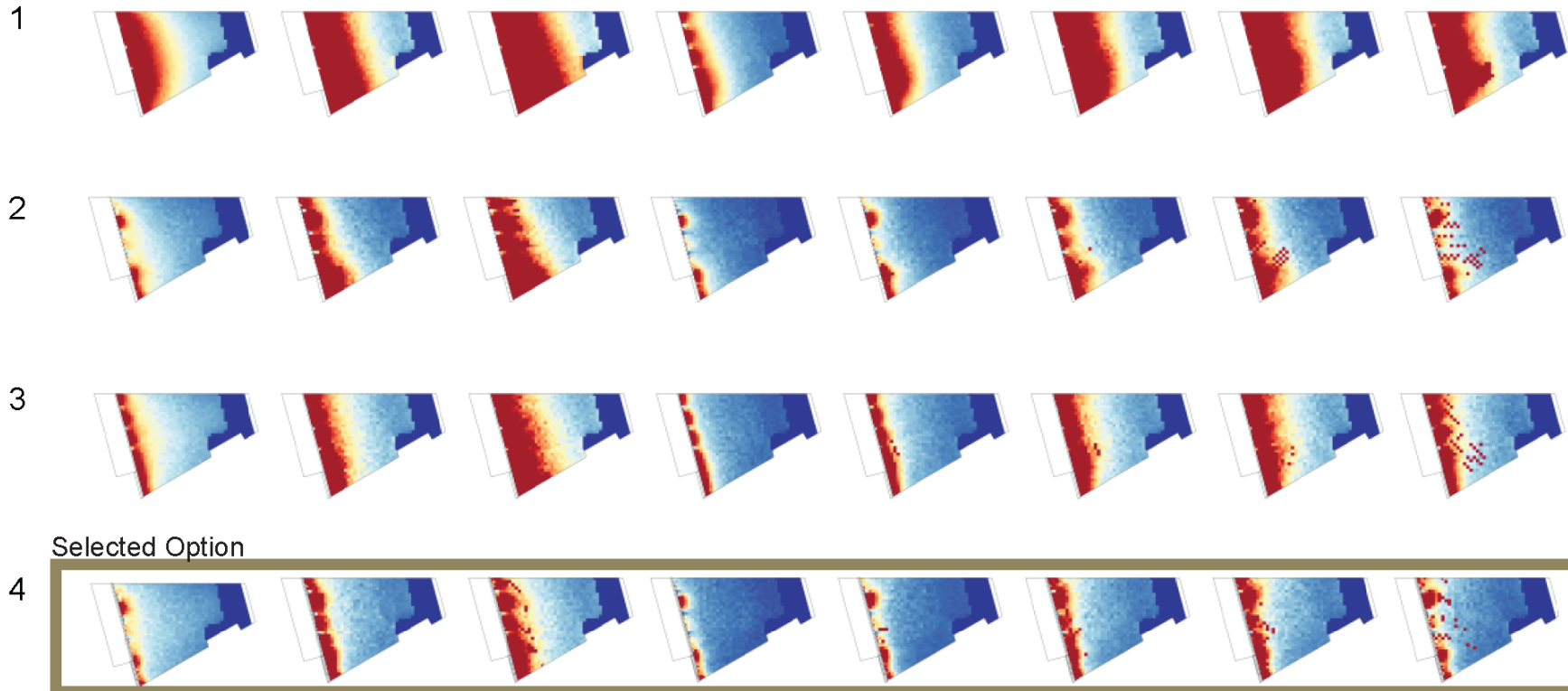


OP - 2

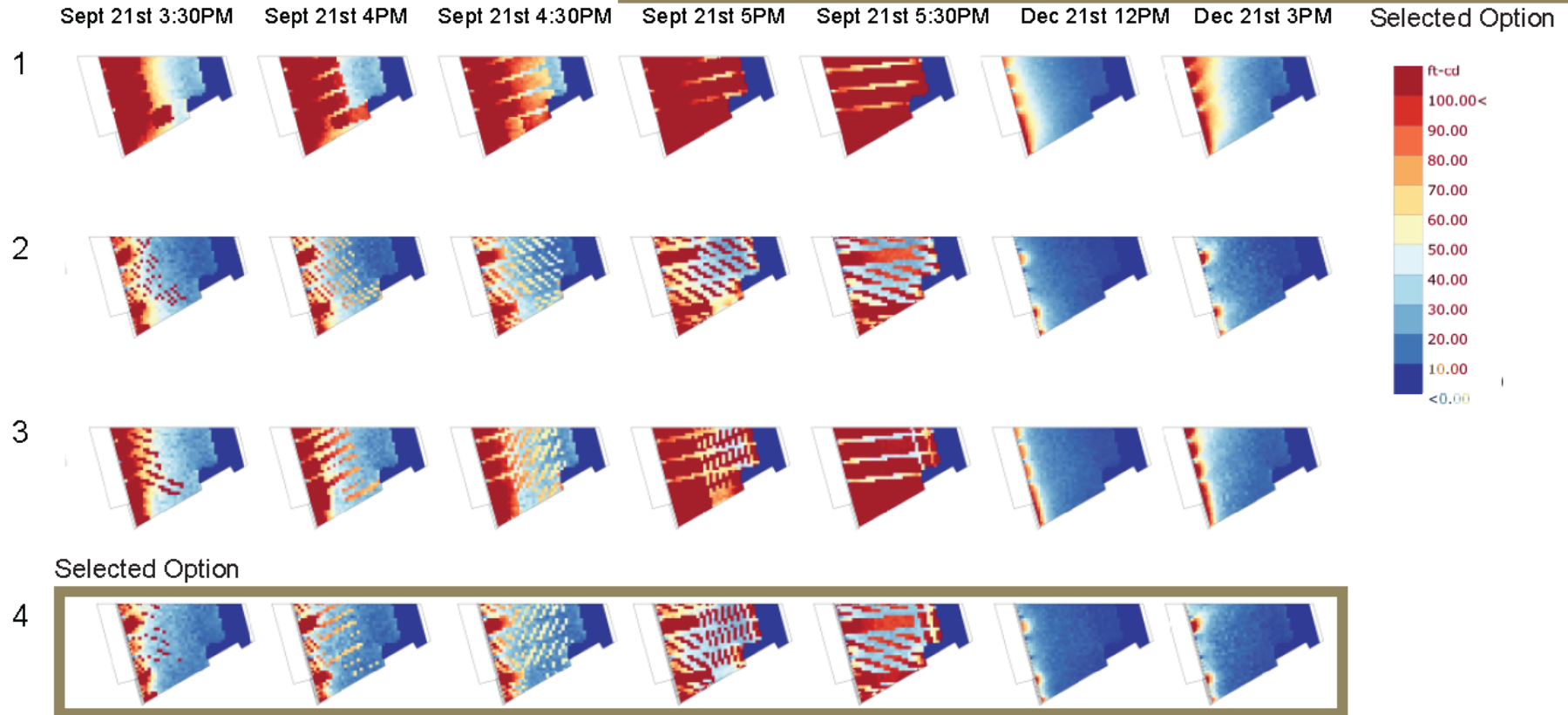
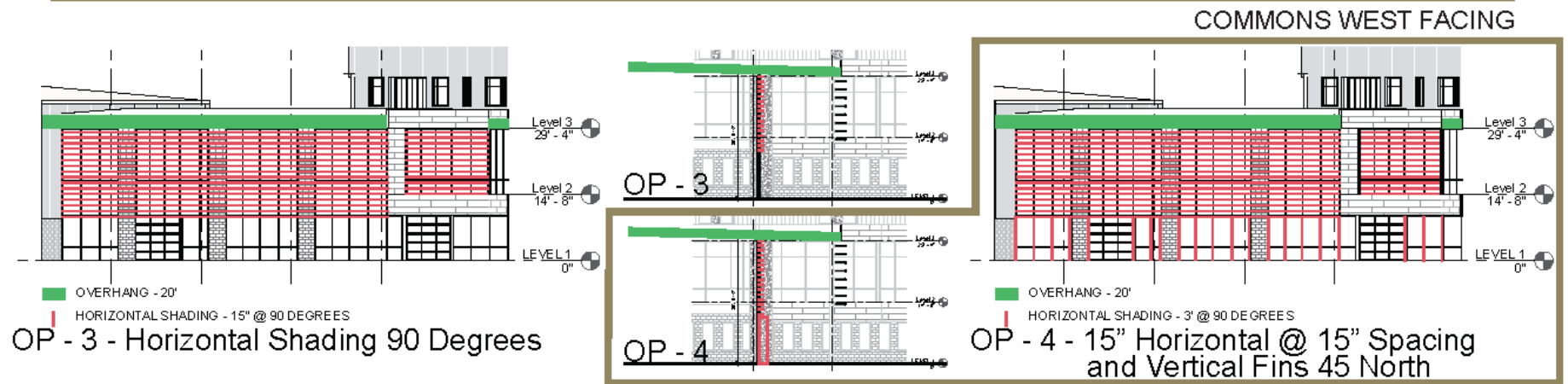


OP - 2 - Vertical Fins 45 North

June 21st 12PM    June 21st 3PM    June 21st 5PM    Sept 21st 12PM    Sept 21st 1PM    Sept 21st 2PM    Sept 21st 2:30PM    Sept 21st 3PM



## S7 / Daylighting Studies



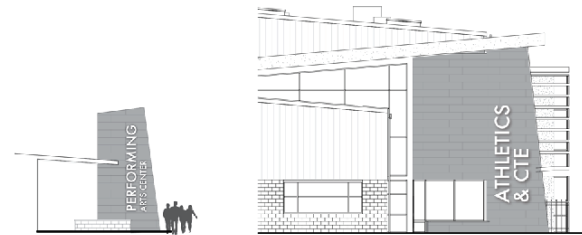


## Sign Type ES-A\*

### School Name and Destinations at Main Entry

Letters to be 1" thick aluminum, stud mounted flush to wall surface, non-illuminated. Letters to be painted, paint colors TBD.

FERDALE HIGH SCHOOL: Overall estimated dimensions = 60"(w) x 38'-0"(h)  
 MAIN OFFICE: Overall estimated dimensions = 32"(w) x 23'-0"(h)  
 ATHLETICS: Overall estimated dimensions = 32"(w) x 17'-0"(h)  
 & CTE: Overall estimated dimensions = 32"(w) x 9'-0"(h)  
 PERFORMING: Overall estimated dimensions = 21"(w) x 15'-0"(h)  
 ARTS CENTER: Overall estimated dimensions = 14"(w) x 9'-0"(h)



ES-C

Scale 0.125" = 1'-0"

## Sign Type ES-B\*

### School Address Numbers

Numbers to be 1" thick aluminum and stud mounted flush to wall surface. Each number to be 12" tall, paint color TBD.

Quantity for Estimating: 1  
 Mounting Location: TBD

5  
8  
3  
0

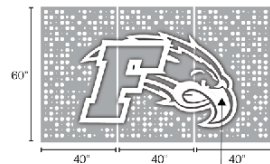
Scale 1" = 1'-0"

## Sign Type ES-C\*

### Logo Screen

(3) 0.25" thick passivated stainless steel panels, custom die-cut pattern routed to form decorative / perforated screen. (3) panels to be mounted on engineered mounting structure. Logo to be die-cut from 0.25" thick aluminum, painted and stud mounted 0.5" from panel surface. Final artwork, die-cut screen pattern and paint colors TBD.

(3) Panels: Overall estimated dimensions = 40"(w) x 60"(h)  
 Logo: Overall estimated dimensions = 7'-0"(w) x 4'-0"(h)



Logo to be stud mounted, separate die-cut element

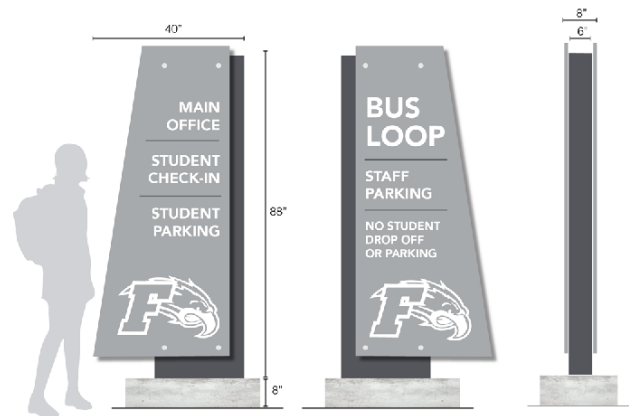
Scale 0.5" = 1'-0"

## Sign Type ES-D\*

### Pedestrian and Vehicular Wayfinding

Metal sign panel face to be 1" depth with 6" dimensional mounting support, painted surfaces, applied outdoor vinyl graphics and text. Signs to be double sided. Paint colors, messaging and artwork TBD.

Quantity for Estimating: 6  
 Mounting Location: TBD



Required footing dimensions to be verified by signage contractor for optimum structural integrity.

PROFILE

Scale 1" = 1'-0"

## Sign Type ES-E\*

### Exterior Light Pole Banners

High quality, all weather, durable outdoor banners, double sided with wind slits. Mounted direct to light poles with durable exterior grade hardware. Final artwork TBD.

Quantity for Estimating: 16  
 Mounting Location: TBD



Scale 1" = 1'-0"

\*All graphics are conceptual. Actual shop drawings ready for construction are the responsibility of the sign contractor.

S8  
Signage





## S8 / Signage

### Sign Type IS-A\* Overhead Directional Sign

Double sided, ceiling mount directional signs located in center of corridor hallways. 1" dimensional sign face mounted to 2" wide sign support. Sign panels to be painted, messaging to be applied die-cut vinyl. Paint colors, messaging and artwork TBD.

Quantity for Estimating: 5  
Mounting Location: TBD

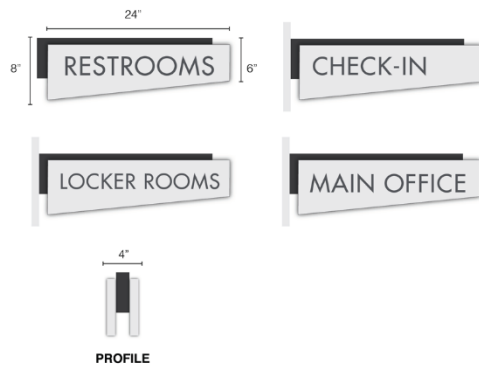


Scale 1" = 1'-0"

### Sign Type IS-B\* Cantilever Wall Mount Signs

Double sided, cantilever wall mount signs. 1" dimensional sign face mounted to 2" wide sign support. Sign panels to be painted, messaging to be applied die-cut vinyl. Paint colors, messaging and artwork TBD.

Quantity for Estimating: 11  
Mounting Location: TBD

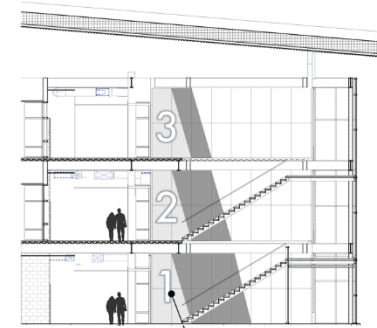


Scale 2" = 1'-0"

### Sign Type IS-C\* Main Stair Floor Numbers / Artwork

Numbers to be 2" thick dimensional lettering, peg mounted flush to wall. Material to be acrylic, or comparable/recommended durable sign material. Sign surface to be painted to match wall color, profile edge of sign to be painted accent color, example shown below. Colors and final artwork TBD.

3 = Overall estimated size 4'(w) x 6'(h)  
2 = Overall estimated size 4'(w) x 6'(h)  
1 = Overall estimated size 2'(w) x 6'(h)



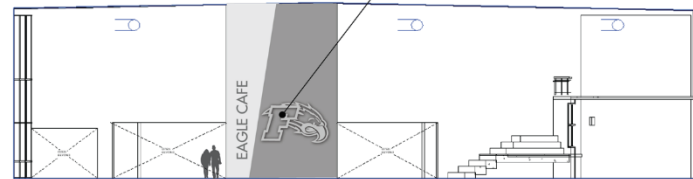
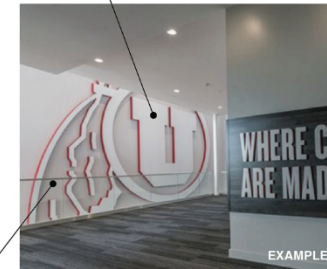
Scale 0.125" = 1'-0"

### Sign Type IS-D\* Eagle Cafe and Logo Signage in Commons

Vertical wall letters to be 0.5" thick acrylic, stud mounted flush to wall surface. Letters to be painted, paint color TBD.

Mascot / logo to be 2" dimensional, custom die-cut artwork. Material to be acrylic, or comparable/recommended durable sign material. Sign surface to be painted to match wall color, profile edge of artwork to be painted accent color, example shown to right. Colors and final artwork TBD.

EAGLE CAFE: Overall estimated dimensions = 24'(w) x 14'-0"(h)  
Mascot/logo: Overall estimated dimensions = 13'-0"(w) x 9'-0"(h)



Scale 0.125" = 1'-0"



## Sign Type IS-E\*

### Dimensional Destination Wall Lettering

Letters to be acrylic 0.5" thick dimensional lettering, peg mounted flush to wall. Letters to be painted, color and messaging TBD.

Estimated height of each letters to be 10"-20" depending on final messaging. Angular mounting panels to be installed by general contractor.

**Quantity for Estimating:** 10 destination letter sign  
**Mounting Location:** TBD



Scale 0.5" = 1'-0"

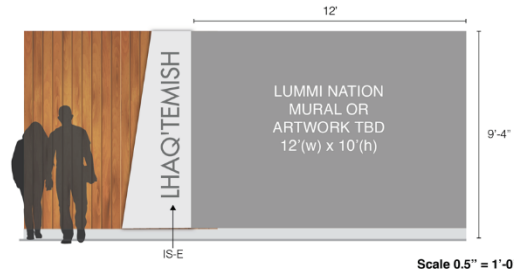
## Sign Type IS-F\*

### Large Wall Graphic, Single Image

Smooth finish wall will be provided by general contractor. Images or artwork will be digitized and applied to wall surface in durable vinyl wall wrap. Artwork TBD

Overall size of estimated space of each graphic to be 12'(w) x 10'(h)

**Quantity for Estimating:** 4 areas, each 12'(w) x 10'(h)  
**Mounting Location:** TBD



Scale 0.5" = 1'-0"

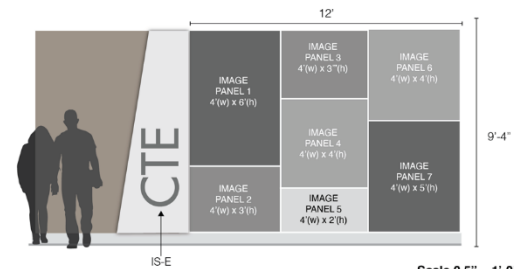
## Sign Type IS-G\*

### Large Wall Graphic, Multiple Images

Mosaic wall graphic to consist of (7) panels of varying sizes. Panels to be 0.5" thick acrylic flush mounted to wall with mounting pegs in each corner for removability. Images and artwork to be digitized and applied to panels in durable vinyl wrap. Edges of panels to be black with 0.5" gap between each panel. Artwork TBD

Overall size of estimated space of each section to be 12'(w) x 10'(h)

**Quantity for Estimating:** 4 areas, each 12'(w) x 10'(h) with 7 image panels  
**Mounting Location:** TBD



Scale 0.5" = 1'-0"

## Sign Type IS-H\*

### Educational, Interpretive and Tribal Land Acknowledgment Signs

Single sided, mounted flush to wall. Sign panel to be 0.5" thick with applied graphic vinyl print, edges to be black. Final sign sizes to vary and layouts TBD.

**Quantity for Estimating:** 4  
**Mounting Location:** TBD



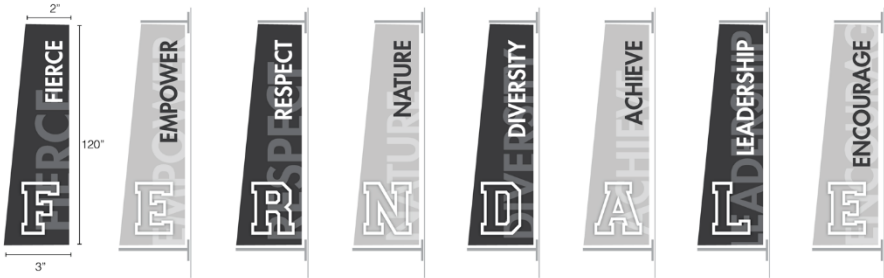
Scale 1" = 1'-0"

S8 / Signage

Sign Type IS-I\*  
Cantilever Wall Mount Banners,  
Double Sided

(8) full color fabric, double sided, direct dye sublimation  
print banners. Each banner to have a unique design.  
Final banner artwork and colors TBD.

Quantity for Estimating: 8  
Mounting Location(s): TBD

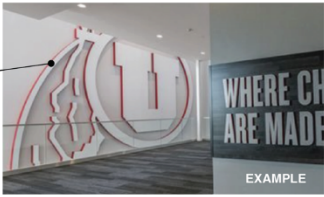


Scale 0.5" = 1'-0"

Sign Type IS-J\*  
Main Gym Hallway Wall Wrap and Logo

Full color vinyl wall graphics, located outside main gym entry.  
Mascot / logo to be 2" dimensional, custom die-cut artwork.  
Material to be acrylic, or comparable/recommended durable sign  
material. Sign surface to be painted to match wall color, profile  
edge of artwork to be painted accent color, example shown to  
right. Colors and final artwork TBD.

Wall Wrap: Overall estimated dimensions = 30'(w) x 10'(h)  
Mascot/logo: Overall estimated dimensions = 13'-0"(w) x 9'-0"(h)



Sign Type IS-K\*  
Add a Year Sports and Academic Boards

Single sided, wall mount, ridged board banners. Boards to be made of  
1/8" dibond (or appropriate substitute). Permanent graphics to be  
applied vinyl, years to be die-cut applied vinyl.

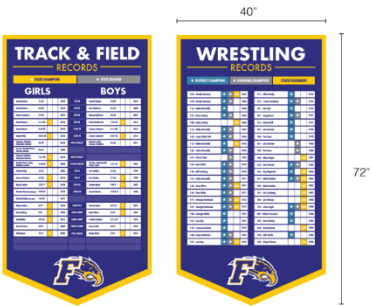
Quantity for Estimating: 40 (best estimate, quantity may change)  
Mounting Location(s): TBD



Sign Type IS-L\*  
Records Boards

Single sided, wall mount, ridged board banners. Panels to be made of  
1/8" metal. Permanent graphics to be applied vinyl, interchangeable  
record line items to be magnetic elements and repositionable.

Quantity for Estimating: 6 (best estimate, quantity may change)  
Mounting Location(s): TBD

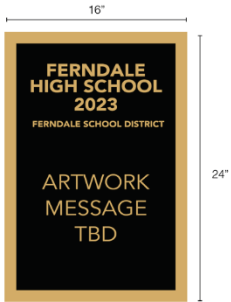


Scale 2" = 1'-0"

Sign Type IS-M\*  
School Dedication Plaque

Custom cast bronze dedication plaque, wall mounted. Final  
artwork and message TBD.

Quantity for Estimating: 1  
Mounting Location(s): TBD



Scale 3" = 1'-0"

